



Australian Government  
Department of Social Services

# Data Exchange System Web services technical specifications

Version Number: 5  
Revision Date: March 2024



## Document change history

Version	Date	Change
1.0	14 October 2014	Initial document release. First document reference 29723351
1.1	28 November 2014	Remove CRN and ConsentGivenToDepartment as an element of Client as they are no longer required.
1.2	21 July 2015	Additions for 'CHSP program specific' changes for Client, Case & Session.
1.3	15 October 2015	<p>Additions of new capability to manage organisation Outlet with following new methods</p> <ul style="list-style-type: none"> <li>• GetOrganisationActivities</li> <li>• AddOutlet</li> <li>• UpdateOutlet</li> <li>• DeleteOutlet</li> </ul> <p>Update to existing search client method</p> <ul style="list-style-type: none"> <li>• SearchClient: new criteria item 'Tags'.</li> </ul> <p>Expected production release date is 12<sup>th</sup> Dec 2015</p>
1.4	7 November 2016	Changes to 'Activity Specific Requirements'
1.5	25 July 2017	<p>Changes to 'Activity Specific Requirements'.</p> <p>Adding TopicCode for AddSession, UpdateSession and GetSession</p>
1.6	23 November 2017	Correction for mandatory conditional and optional on ValidateForDuplicateClient
1.7	23 April 2018	<p>IsHomeless (Boolean) changed to HomelessIndicatorCode (string) at DataCollection.Recipient operations.</p> <p>Added EducationLevelCode, EmploymentStatusCode, IsClientACarer, and NDISEligibilityCode for DataCollection.Recipient operations.</p> <p>Added ClientAttendanceProfileCode and EndDate for DataCollection.Case operations.</p> <p>Added ServiceSettingCode for DataCollection.Session operations.</p> <p>Added AssessedByCode for DataCollection.Assessments operations.</p> <p>GetServiceTypeForOutletActivity method no longer supported. Now retrieved with GetOrganisationActivity method.</p> <p>GetOrganisationActivity response now includes ActivitySpecificRequirements, ActivityServiceTypes, and AvailableAssessmentTypes.</p> <p>IsAgdType removed from GetOutletActivities</p>

Version	Date	Change
1.8	19 March 2019	<p>Add AvailableFrom and AvailableTo to:</p> <ul style="list-style-type: none"> <li>• ServiceType,</li> <li>• ServiceTypeSpecificRequirements,</li> <li>• ActivitySpecificRequirements,</li> <li>• AvailableAssessmentType</li> </ul> <p>for GetOrganisationActivities method</p>
1.9	1 September 2019	<p>Terminology updates (Service Provider to Organisation).</p> <p>Further advice added to ClientId, Caseld, and SessionId validation rules.</p> <p>Corrected order of address fields in 'Get response' examples.</p>
1.10	1 February 2021	<p>Added PropertyAgreementOutcome (and subsequently PropertyAgreementOutcomeCode, DateOfPropertyAgreement, and DidLegalPractitionerAssistInPropertyMediation) for DataCollection.Case operations.</p>
1.11	27 April 2021	<p>Added AgBusinessTypeCode for DataCollection.Case operations.</p> <p>Added HardshipTypeCode, and ExternalReferralDestinationCode for DataCollection.Session operations.</p> <p>Expected production release in June 2021.</p>
2	03 April 2023	<p>Added advice that client, case, and session Ids are not case sensitive.</p> <p>General formatting changes.</p>
3	30 June 2023	<p>Addressed document readability and accessibility.</p> <p>Formatting changes.</p>
4	1 November 2023	<p>Added references to revised GenderCode, GenderDetails</p> <p>Expected production release date in March 2024.</p>
4.1	December 2023	<p>Provided further guidance on recording SLK when a name is too short.</p>
5	2 March 2025	<p>Removed watermarks relating to staging environment. This version of the Web Service technical specifications apply to both staging and live Data Exchange reporting environment.</p>

# Contents

<b>1</b>	<b>Overview</b>	<b>10</b>
1.1	The Data Exchange	10
1.2	Purpose of this document	10
<b>2</b>	<b>High level data structure</b>	<b>11</b>
2.1	Data structure definition	12
<b>3</b>	<b>Interface availability</b>	<b>13</b>
3.1	Production	13
3.2	Pre-production	13
3.3	Interface addresses	13
3.4	Updating period	13
<b>4</b>	<b>Service interface listing</b>	<b>14</b>
4.1	DataCollection.Utilities	14
4.2	DataCollection.Reference	14
4.3	DataCollection.Organisation	15
4.4	DataCollection.Recipient	15
4.5	DataCollection.Case	16
4.6	DataCollection.Session	18
4.7	DataCollection.Assessments	20
4.8	DataCollection.Outlets	20
<b>5</b>	<b>Message Definitions</b>	<b>22</b>
5.1	Data Types	22
5.2	Validation Rules	22
5.3	Technical Requirements	22
5.3.1	Compression	22
5.3.2	Security	22
5.3.3	Request and response definitions	23
5.3.4	Request identifiers for web services	23
5.3.5	Request schema	24
5.3.6	Response schema	25
5.3.7	'Header' control	25
5.3.8	Transaction data	25
5.3.9	TransactionStatus	26
5.3.9.1	TransactionStatus definition	26
5.3.9.2	TransactionStatusCode descriptions	26
5.3.9.3	Messages	27
5.3.10	Error handling	27
5.3.10.1	Schema and system errors	27

5.3.10.2	Schema error example.....	29
5.3.10.3	System error example.....	30
5.3.10.4	Business errors.....	31
5.4	Statistical Linkage Key (SLK).....	31
5.4.1	SLK algorithm.....	31
5.4.2	SLK regular expression.....	32
5.4.3	SLK examples.....	33
<b>6</b>	<b>Interface method definitions.....</b>	<b>34</b>
6.1	DataCollection.Utilities.....	34
6.1.1	Ping.....	34
6.1.1.1	Ping request message definition.....	34
6.1.1.2	Ping example request message.....	34
6.1.1.3	Ping response message definition.....	35
6.1.1.4	Ping example response message.....	35
6.2	DataCollection.Reference.....	36
6.2.1	GetReferenceData.....	36
6.2.1.1	GetReferenceData request message definition.....	36
6.2.1.2	GetReferenceData example request message.....	37
6.2.1.3	GetReferenceData response message definition.....	38
6.2.1.4	GetReferenceData example response message.....	38
6.2.2	GetAssessmentReferenceDetails.....	39
6.2.2.1	GetAssessmentReferenceData request message definition.....	39
6.2.2.2	GetAssessmentReferenceDetails example request message.....	40
6.2.2.3	GetAssessmentReferenceDetails response message definition.....	40
6.2.2.4	GetAssessmentReferenceDetails example response message.....	41
6.3	DataCollection.Organisation.....	44
6.3.1	GetOrganisation.....	44
6.3.1.1	GetOrganisation request message definition.....	44
6.3.1.2	GetOrganisation example request message.....	44
6.3.1.3	GetOrganisation response message definition.....	44
6.3.1.4	GetOrganisation example response message.....	46
6.3.2	GetOrganisationActivities.....	47
6.3.2.1	GetOrganisationActivities request message definition.....	47
6.3.2.2	GetOrganisationActivities example request message.....	47
6.3.2.3	GetOrganisationActivities response message definition.....	47
6.3.2.4	GetOrganisationActivities example response message.....	50

6.3.3	GetOutlet.....	52
6.3.3.1	GetOutlet request message definition.....	52
6.3.3.2	GetOutlet example request message .....	53
6.3.3.3	GetOutlet response message definition.....	53
6.3.3.4	GetOutlet example response message.....	54
6.3.4	GetOutletActivities.....	54
6.3.4.1	GetOutletActivities request message definition .....	54
6.3.4.2	GetOutletActivities example request message .....	55
6.3.4.3	GetOutletActivities response message definition.....	55
6.3.4.4	GetOutletActivities example response message .....	56
6.3.5	GetUser.....	57
6.3.5.1	GetUser request message definition.....	57
6.3.5.2	GetUser example request message .....	57
6.3.5.3	GetUser response message definition.....	57
6.3.5.4	GetUser example response message.....	58
6.4	DataCollection.Recipient .....	60
6.4.1	AddClient.....	60
6.4.1.1	AddClient request message definition .....	60
6.4.1.2	AddClient example request message .....	64
6.4.1.3	AddClient response message definition.....	67
6.4.1.4	AddClient example response message .....	67
6.4.2	GetClient .....	67
6.4.2.1	GetClient request message definition .....	68
6.4.2.2	GetClient example request message.....	68
6.4.2.3	GetClient response message definition .....	68
6.4.2.4	GetClient example response message .....	70
6.4.3	SearchClient.....	72
6.4.3.1	SearchClient request message definition .....	72
6.4.3.2	SearchClient example request message .....	73
6.4.3.3	SearchClient response message definition.....	74
6.4.3.4	SearchClient example response message .....	74
6.4.4	ValidateForDuplicateClient.....	75
6.4.4.1	ValidateForDuplicateClient request message definition.....	76
6.4.4.2	ValidateForDuplicateClient example request message .....	76
6.4.4.3	ValidateForDuplicateClient response message definition.....	77
6.4.4.4	ValidateForDuplicateClient example response message.....	78

6.4.5	UpdateClient .....	80
6.4.5.1	UpdateClient request message definition .....	81
6.4.5.2	UpdateClient example request message .....	85
6.4.5.3	UpdateClient response message definition .....	88
6.4.5.4	UpdateClient response message .....	88
6.4.6	DeleteClient.....	88
6.4.6.1	DeleteClient request message definition .....	88
6.4.6.2	DeleteClient example request message .....	88
6.4.6.3	DeleteClient response message definition.....	89
6.4.6.4	DeleteClient example response message .....	89
6.5	DataCollection.Case .....	90
6.5.1	AddCase .....	90
6.5.1.1	AddCase request message definition .....	90
6.5.1.2	AddCase example Rrequest message .....	92
6.5.1.3	AddCase response message definition .....	94
6.5.1.4	AddCase example response message .....	95
6.5.2	GetCase .....	95
6.5.2.1	GetCase request message definition.....	95
6.5.2.2	GetCase Example Request Message.....	95
6.5.2.3	GetCase response message definition .....	95
6.5.2.4	GetCase example response message.....	97
6.5.3	SearchCase .....	99
6.5.3.1	SearchCase request message definition .....	99
6.5.3.2	SearchCase example request message .....	100
6.5.3.3	SearchCase response message definition .....	102
6.5.3.4	SearchCase example response message .....	103
6.5.4	UpdateCase .....	104
6.5.4.1	UpdateCase example request definition .....	104
6.5.4.2	UpdateCase example request message .....	107
6.5.4.3	UpdateCase response message definition .....	108
6.5.4.4	UpdateCase example response message .....	109
6.5.5	DeleteCase .....	109
6.5.5.1	DeleteCase request message definition .....	109
6.5.5.2	DeleteCase example request message .....	109
6.5.5.3	DeleteCase response message definition .....	109
6.5.5.4	DeleteCase example response message .....	110

- 6.6 DataCollection.Session..... 111
  - 6.6.1 AddSession ..... 111
    - 6.6.1.1 AddSession request message definition ..... 111
    - 6.6.1.2 AddSession example request message..... 113
    - 6.6.1.3 AddSession response message definition ..... 115
    - 6.6.1.4 AddSession example response message..... 116
  - 6.6.2 GetSession..... 116
    - 6.6.2.1 GetSession request message definition ..... 116
    - 6.6.2.2 GetSession example request message ..... 116
    - 6.6.2.3 GetSession response message definition..... 116
    - 6.6.2.4 GetSession example response message ..... 119
  - 6.6.3 UpdateSession ..... 121
    - 6.6.3.1 UpdateSession request message definition..... 121
    - 6.6.3.2 UpdateSession example request message ..... 124
    - 6.6.3.3 UpdateSession response message definition..... 126
    - 6.6.3.4 UpdateSession example response message..... 126
  - 6.6.4 DeleteSession ..... 126
    - 6.6.4.1 DeleteSession request message definition..... 127
    - 6.6.4.2 DeleteSession example request message..... 127
    - 6.6.4.3 DeleteSession response message definition ..... 127
    - 6.6.4.4 DeleteSession example response message..... 127
- 6.7 DataCollection.Assessments ..... 128
  - 6.7.1 UpdateClientAssessments ..... 128
    - 6.7.1.1 UpdateClientAssessments request message definition ..... 128
    - 6.7.1.2 UpdateClientAssessments example request message..... 129
    - 6.7.1.3 UpdateClientAssessments response message definition ..... 130
    - 6.7.1.4 UpdateClientAssessments example response message..... 130
  - 6.7.2 UpdateSessionAssessments..... 130
    - 6.7.2.1 UpdateSessionAssessments request message definition ..... 130
    - 6.7.2.2 UpdateSessionAssessments example request message ..... 131
    - 6.7.2.3 UpdateSessionAssessments response message definition..... 132
    - 6.7.2.4 UpdateSessionAssessments example response message ..... 132
- 6.8 DataCollection.Outlets ..... 133
  - 6.8.1 AddOutlet ..... 133
    - 6.8.1.1 AddOutlet Request Message Definition ..... 133
    - 6.8.1.2 AddOutlet example request message..... 134



6.8.1.3	AddOutlet response message definition .....	134
6.8.1.4	AddOutlet Example response message.....	135
6.8.2	UpdateOutlet.....	135
6.8.2.1	UpdateOutlet request message definition.....	135
6.8.2.2	UpdateOutlet example request message.....	136
6.8.2.3	UpdateOutlet response message definition .....	137
6.8.2.4	UpdateOutlet example response message.....	137
6.8.3	DeleteOutlet.....	137
6.8.3.1	DeleteOutlet Request message definition.....	137
6.8.3.2	DeleteOutlet example request message.....	138
6.8.3.3	DeleteOutlet response message definition .....	138
6.8.3.4	DeleteOutlet example response message .....	138
6.9	Common message definitions.....	138
6.9.1	Request message definitions .....	138
6.9.1.1	Search request message definition .....	138
6.9.2	Response message definitions .....	139
6.9.2.1	Client response message definition .....	139
<b>7</b>	<b>Appendix A. Activity specific requirements .....</b>	<b>139</b>
<b>8</b>	<b>Appendix B. Service type specific requirements.....</b>	<b>144</b>

## 1 Overview

### 1.1 The Data Exchange

The Data Exchange represents the program performance reporting approach for client facing funding agreements. The Department of Social Services (DSS) progressively introduced standardised, prioritised, and collaborative reporting processes across grants programs from 1 July 2014.

This approach to reporting is a streamlined, processes automated and shifts the focus of performance measurement from outputs to more meaningful information about service delivery outcomes.

The requirements of the Data Exchange are divided into two parts: a small set of mandatory priority requirements that all organisations report, and an extended data set, known as the partnership approach. As part of the partnership approach, organisations are encouraged to collect the Standard Client/Community Outcome Reporting (SCORE) information for as many clients as practical.

Organisations can access a free IT system to manually input client data. This helps record clients, service and outcomes data that meet funding agreement performance data requirements and allows organisations to confidentially manage their core client and case information.

### 1.2 Purpose of this document

This document specifies the technical requirements for organisations who would prefer to transmit their data using system-to-system transfers. This will be achieved by transferring data from a third party software application using the Data Exchange System Web Services interface.

The following is described within this document:

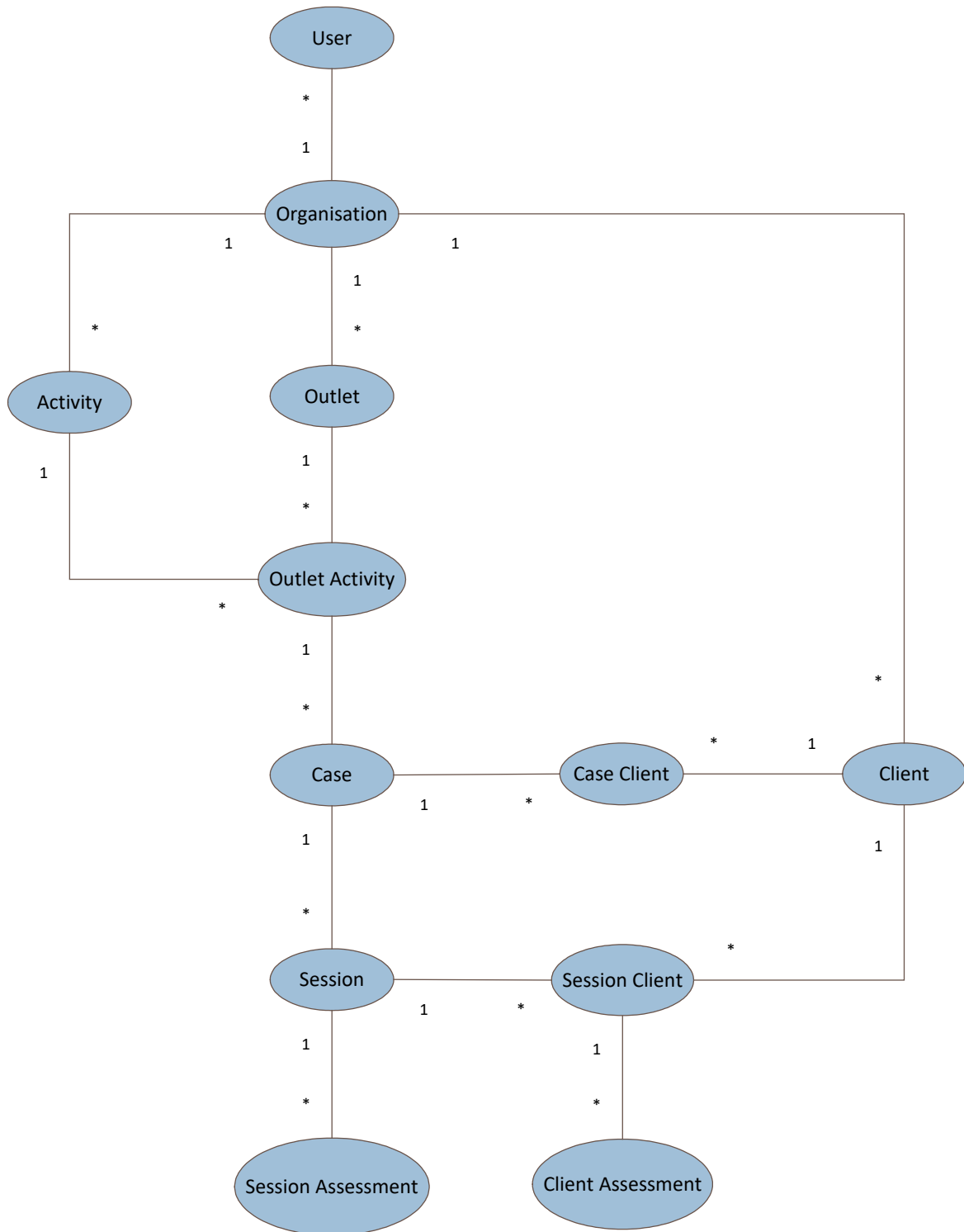
- a) Interface availability,
- b) Service interface listing,
- c) Message definitions, and
- d) Interface method definitions.

You should read this document in conjunction with the [Data Exchange Protocols](#), available on the [Data Exchange Website](#).

For assistance regarding content in this document, please contact the helpdesk by email at [DSSDataExchange.Helpdesk@dss.gov.au](mailto:DSSDataExchange.Helpdesk@dss.gov.au) or on 1800 020 283.

## 2 High level data structure

The following diagram illustrates a high-level relationship between the entities.



## 2.1 Data structure definition

No.	Data	Definition
1.	Activity	An <b>activity</b> is the program that an organisation is funded to deliver.
2.	Client	A <b>client</b> is an individual who receives a service as part of a funded activity.
3.	Client assessment	A <b>client assessment</b> is an assessment (e.g. client circumstances, client goal or client satisfaction assessment) conducted against clients who have attended a session.
4.	Case	A <b>case</b> is a grouping of one or more sessions. A case consists of data that relates to an activity being delivered at an Outlet.
5.	Case client	A <b>case client</b> represents a client who is involved with the case. Additional data may be recorded against clients associated with a case.
6.	Organisation	An organisation is a service provider.
7.	Outlet	An <b>outlet</b> is the location from which services are being delivered.
8.	Outlet activity	An <b>outlet activity</b> represents an outlet and the activity that outlet is able to deliver.
9.	Session	A <b>session</b> is an instance or episode of service delivered to a client or a group of clients. A session may consist of data that relates an activity and service type.
10.	Session client	A <b>session client</b> is a client who is involved with the case <b>and</b> has attended a particular session.
11.	Session assessment	A <b>session assessment</b> is a group assessment (e.g. community assessment) conducted against all clients who have attended a session.
12.	User	A <b>user</b> is a representative of the organisation.

### 3 Interface availability

The following section provides information on interface availability. Software designers should take into account availability of the Data Exchange system when designing their software.

#### 3.1 Production

It is expected that the interface will be generally available<sup>1</sup> at all times. In the event that the interface is unavailable, DSS will endeavour to provide information to the organisations about the outage. For support, please visit the [Data Exchange helpdesk page](#).

Software designers should be aware of the availability of the Data Exchange system when designing their software. If the interface is unavailable, it is expected that the Service Provider Software will store the data and when the interface is available, the data will be re-sent. For example, the software may try to send the data once it has been entered, however if the interface is unavailable it should be stored and resent again later. Alternatively, the Service Provider Software may batch up the data and send this through when the interface is available again. Therefore, the unavailability of the Data Exchange System interface should not stop the day-to-day operation of the organisation.

A 'Ping' interface has been defined that will enable software to query the Data Exchange system and can be used to test connectivity and authentication. The interface provides no functionality other than to return a blank response. The intent of the interface is to assist in testing and diagnosing connection and authentication issues.

Ideally, DSS would prefer that software be designed so that organisations using the same software do not interface data at exactly the same time. That is, DSS would prefer the load of data from a software provider to be 'randomly' spread across the day and not all transmitted at the same time.

#### 3.2 Pre-production

Any pre-production system provided by DSS, for testing purposes, will have varying levels of availability. Software providers should contact the Data Exchange helpdesk to determine availability before using a pre-production system.

#### 3.3 Interface addresses

The Data Exchange System Services will be available at the following URLs.

Environment	Address
Production	<a href="https://api.dss.gov.au/datacollection/dex">https://api.dss.gov.au/datacollection/dex</a>
Pre-Production	<a href="https://staging-api.dss.gov.au/datacollection/dex">https://staging-api.dss.gov.au/datacollection/dex</a>

#### 3.4 Updating period

Input into the Data Exchange system will only be allowed to be added or modified within a fixed updating period.

---

<sup>1</sup> Generally, available means that DSS will endeavour to have the interface available, outages, maintenance periods and factors outside of DSS control may prevent this.

## 4 Service interface listing

The following sections provide a listing and description of the interfaces that comprise the Data Exchange System Web Service Interface. **All methods are for a single organisation associated with the web service user.**

### 4.1 DataCollection.Utilities

Operation	Date Locking	Description
Ping	Not applicable	The intent of this method is to enable organisations to test connectivity and authentication with the Data Exchange system.

### 4.2 DataCollection.Reference

Operation	Date Locking	Description
GetReferenceData	Not applicable	<p>Generic service to Get a list requested ReferenceData. The following reference data are downloadable via this interface and returns a list of active code, description and order. Current reference codes:</p> <ol style="list-style-type: none"> <li>1. All</li> <li>2. AboriginalOrTorresStraitIslanderOrigin</li> <li>3. AccommodationType</li> <li>4. AgBusinessType</li> <li>5. Ancestry</li> <li>6. AssessedBy</li> <li>7. AssessmentPhase</li> <li>8. AttendanceProfile</li> <li>9. Country</li> <li>10. Disability</li> <li>11. DVACardStatus</li> <li>12. EducationLevel</li> <li>13. EmploymentStatus</li> <li>14. ExitReason</li> <li>15. ExternalReferralDestination</li> <li>16. Extraltem</li> <li>17. Gender</li> <li>18. HardshipType</li> <li>19. HomelessIndicator</li> <li>20. HouseholdComposition</li> <li>21. IncomeFrequency</li> <li>22. Language</li> <li>23. MainSourceOfIncome</li> <li>24. MigrationVisaCategory</li> <li>25. MoneyBusinessCommunityEducationWorkshop</li> <li>26. NDISEligibility</li> <li>27. ParentingAgreement</li> <li>28. ParticipationType</li> <li>29. PropertyAgreement</li> <li>30. ReasonForAssistance</li> </ol>

Operation	Date Locking	Description
		31. ReferralPurpose 32. ReferralSource 33. ReferralType 34. State 35. ScoreType 36. Section60ICertificateType 37. ServiceSetting 38. Topic
GetAssessmentReferenceDetails	Not applicable	Service to Get a list requested AssessmentReferenceDetails. Please use GetOrganisationActivities for AvailableAssessmentTypes related to activity you are working with.

### 4.3 DataCollection.Organisation

Operation	Date Locking	Description
GetOrganisation		Gets the user's organisation.
GetOrganisationActivities		Gets the user's organisation activities.
GetOutlet		Gets the user's outlet for the given outlet id.
GetOutletActivities		Gets user's outlet activities.

### 4.4 DataCollection.Recipient

Operation	Date Locking	Description
AddClient		Adds a Client with the following given details: <ul style="list-style-type: none"> <li>• ClientId (unique organisation's client Id)</li> <li>• Consent</li> <li>• Personal information</li> <li>• Disabilities</li> </ul>
GetClient		Gets the specified client with consent, personal information, disabilities, cases.
SearchClient		Search client records which match the specified search criteria.
ValidateForDuplicateClient		Gets the duplicate clients which match the specified criteria.

Operation	Date Locking	Description
UpdateClient		<p>Updates the specified client with the following given details:</p> <ul style="list-style-type: none"> <li>• Consent</li> <li>• Personal information</li> <li>• Disabilities</li> </ul>
DeleteClient		<p>Deletes the client that matches the specified ClientId (organisation's client Id).</p>

## 4.5 DataCollection.Case

Operation	Date Locking	Description
AddCase		<p>Adds a case with the following given details:</p> <ul style="list-style-type: none"> <li>• Caseld (unique organisation's case Id)</li> <li>• OutletActivityId</li> <li>• No of unidentified clients</li> <li>• ClientAttendanceProfileCode</li> <li>• End date</li> <li>• Ag Business Type Code</li> <li>• Case client details                             <ul style="list-style-type: none"> <li>○ Identified client Ids (organisation's client Ids)</li> <li>○ Reasons for assistance                                     <ul style="list-style-type: none"> <li>▪ Assistance needed code</li> <li>▪ IsPrimary</li> </ul> </li> <li>○ Referral source code</li> <li>○ Exit reason code</li> </ul> </li> <li>• Parenting agreement outcome                             <ul style="list-style-type: none"> <li>○ Parenting agreement outcome code</li> <li>○ Date of parenting agreement</li> <li>○ Did legal practitioner assist with formalising agreement</li> </ul> </li> <li>• Section60I                             <ul style="list-style-type: none"> <li>○ Section 60I Certificate Code</li> <li>○ Date of Section 60I agreement</li> </ul> </li> <li>• Property Agreement Outcome                             <ul style="list-style-type: none"> <li>○ Property agreement outcome code</li> <li>○ Date of property agreement</li> <li>○ Did legal practitioner assist in property mediation</li> </ul> </li> </ul>



Data Exchange System - Web services technical specifications

Operation	Date Locking	Description
GetCase		Gets the specified case details along with the attached identified clients and sessions.
SearchCase		Search case records which match the specified search criteria.
UpdateCase		<p>Updates the specified case with the following given details:</p> <ul style="list-style-type: none"> <li>• OutletActivityId</li> <li>• No of unidentified clients</li> <li>• ClientAttendanceProfileCode</li> <li>• End date</li> <li>• Ag business type Code</li> <li>• Case client details <ul style="list-style-type: none"> <li>○ Identified client Ids (organisation's client Ids)</li> <li>○ Reasons for assistance <ul style="list-style-type: none"> <li>▪ Assistance needed code</li> <li>▪ IsPrimary</li> </ul> </li> <li>○ Referral source code</li> <li>○ Exit reason code</li> </ul> </li> <li>• Parenting agreement outcome <ul style="list-style-type: none"> <li>○ Parenting agreement outcome code</li> <li>○ Date of parenting agreement</li> <li>○ Did legal practitioner assist with formalising agreement</li> </ul> </li> <li>• Section60I <ul style="list-style-type: none"> <li>○ Section 60I Certificate Code</li> <li>○ Date of Section 60I Agreement</li> </ul> </li> <li>• Property agreement outcome <ul style="list-style-type: none"> <li>○ Property agreement outcome code</li> <li>○ Date of property agreement</li> <li>○ Did legal practitioner assist in property mediation</li> </ul> </li> </ul>
DeleteCase		Deletes the specified case.

## 4.6 DataCollection.Session

Operation	Date Locking	Description
AddSession		<p>Adds a session to the specified case with the following given details:</p> <ul style="list-style-type: none"> <li>• Caseld (unique organisation's case Id)</li> <li>• Session Id (unique organisation's session Id)</li> <li>• Session date</li> <li>• Service type Id</li> <li>• No of unidentified clients</li> <li>• Fees charged</li> <li>• Money business community education workshop code</li> <li>• Interpreter present</li> <li>• Session client details               <ul style="list-style-type: none"> <li>○ Identified client Ids (organisation's client Ids)</li> <li>○ Participation code</li> <li>○ Client referral out with purpose</li> </ul> </li> <li>• Time in minutes</li> <li>• Total cost</li> <li>• Topic</li> <li>• Quantity</li> <li>• Extra items</li> <li>• ServiceSettingCode</li> <li>• Hardship type code</li> <li>• External Referral Destination code</li> </ul>
GetSession		Gets the specified session details along with session clients.
DeleteSession		Deletes a specified session.

Data Exchange System - Web services technical specifications

Operation	Date Locking	Description
UpdateSession		<p>Updates the following given details for specified session:</p> <ul style="list-style-type: none"> <li>• Caseld (unique organisation's vase Id)</li> <li>• Session Id (unique organisation's dession Id)</li> <li>• Session fate</li> <li>• Service type Id</li> <li>• No of unidentified clients</li> <li>• Fees charged</li> <li>• Money business community education workshop code</li> <li>• Interpreter present</li> <li>• Session client details                             <ul style="list-style-type: none"> <li>○ Identified client Ids (organisation's client Ids)</li> <li>○ Participation code</li> <li>○ Client referral out with purpose</li> </ul> </li> <li>• Time in minutes</li> <li>• Total cost</li> <li>• Topic</li> <li>• Quantity</li> <li>• Extra items</li> <li>• ServiceSettingCode</li> <li>• Hardship type code</li> <li>• External referral destination code</li> </ul>

## 4.7 DataCollection.Assessments

Operation	Date Locking	Description
UpdateClientAssesments		<p>Adds or updates the following given details for specified client in a session:</p> <ul style="list-style-type: none"> <li>• Case Id (organisation's case Id)</li> <li>• Session Id (organisation's session Id within a case)</li> <li>• Client Id (organisation's client Id associated with the case)</li> <li>• Assessments and scores</li> </ul>
UpdateSessionAssessments		<p>Adds or updates the following given details for specified session in a case:</p> <ul style="list-style-type: none"> <li>• Case Id (organisation's case Id)</li> <li>• Session Id (organisation's Session Id within a case)</li> <li>• Assessments and SCOREs</li> </ul>

## 4.8 DataCollection.Outlets

Operation	Date Locking	Description
AddOutlet		<p>Adds an Outlet with the following details:</p> <ul style="list-style-type: none"> <li>• Outlet name</li> <li>• Address <ul style="list-style-type: none"> <li>○ Suburb</li> <li>○ State</li> <li>○ Postcode</li> <li>○ Address line 1</li> <li>○ Address line 2</li> </ul> </li> <li>• OutletActivities <ul style="list-style-type: none"> <li>○ OrganisationActivityId</li> <li>○ Start date</li> <li>○ End date</li> </ul> </li> </ul>

Operation	Date Locking	Description
UpdateOutlet		<p>Updates an Outlet specified by Outlet Id with the following details:</p> <ul style="list-style-type: none"> <li>• Outlet Id</li> <li>• Outlet name</li> <li>• Address                             <ul style="list-style-type: none"> <li>○ Suburb</li> <li>○ State</li> <li>○ Postcode</li> <li>○ Address Line 1</li> <li>○ Address Line 2</li> </ul> </li> <li>• OutletActivities                             <ul style="list-style-type: none"> <li>○ OrganisationActivityId</li> <li>○ Start Date</li> <li>○ End Date</li> </ul> </li> </ul>
DeleteOutlet		<p>Deletes an Outlet if no case data is associated with it. Outlet activities are deleted also if no case data is associated with them. If case data is associated with an outlet activity then it will be end-dated to the current date:</p> <ul style="list-style-type: none"> <li>• Outlet Id</li> </ul>

## 5 Message Definitions

The following sections detail the various elements of the messages within the interfaces provided by the Data Exchange System Web Service Interface.

### 5.1 Data Types

Definitions of the data types used in the tables below can be found at the World Wide Web Consortium website. The URL for the specifications for the data types is:

<http://www.w3.org/TR/xmlschema-2/#built-in-datatypes>

### 5.2 Validation Rules

The Message Definition tables in the following sections contain a column with Validation Rules. These are the rules that will be applied to the data as it is processed. Some of the data elements have a validation rule like 'Must be a code provided in the Language reference table'.

There will be times when a reference date will be specified next to the rule to a rule. If so, it would be to make sure the data element is valid at a particular point in time. The point in time being checked against will be properly specified against the element to that it applies.

### 5.3 Technical Requirements

Most DSS Web services will cater for requests using SOAP 1.2. This is because using SOAP provides XML schema support for more complex data types. The transport method supported is SSL-encrypted HTTP. Web service calls using HTTP-GET and HTTP-POST are not currently supported (this might change in the future as REST Web Services become more widely supported) and not documented in this standard.

In order to call the DSS Web services, an application or SDK capable of calling XML web services is required. The application or SDK must support the following:

- XML 1.0;
- SOAP 1.2;
- HTTP 1.1; and
- WSE Authentication Headers. (version 3.0)
- Standard Authentication Headers
- Custom Headers

When implementing a responsive application, bandwidth requirements must be taken into consideration. Bandwidth requirements depend on many factors. These include:

- Size of the payload sent to the Data Exchange for processing;
- Frequency of the requests; and
- Data compression.

DSS web services have been designed to minimise the network traffic payload as much as possible. The services provided by DSS are therefore not bandwidth intensive. However, to ensure best performance, DSS recommends a broadband connection for both upstream and downstream traffic. Minimum bandwidth recommendations will be confirmed during performance testing.

#### 5.3.1 Compression

Compression is currently not supported by DSS Web Services.

#### 5.3.2 Security

DSS Web services will use industry standard WSE Authentication Headers (UserName token).

The following security rules apply to login passwords for DSS Web services:

- Web Service Passwords will not expire;
- Web Service UserIDs do not have access to online systems;
- Strong passwords will be used – They must contain a combination of upper and lowercase characters, numbers and special characters (e.g. #, @, \$);
- Password must be between 10 and 15 characters long;
- The maximum number of failed logon attempts before the account will be locked is 5;
- If the account is locked, [DSSDataExchange.Helpdesk@dss.gov.au](mailto:DSSDataExchange.Helpdesk@dss.gov.au) must be contacted to reset the password;

### 5.3.3 Request and response definitions

The following object types are used generally in all DSS Web services.

- Response objects and request objects;
- 'Header' control structure (soap header)
- Response transaction data and request transaction data.

### 5.3.4 Request identifiers for web services

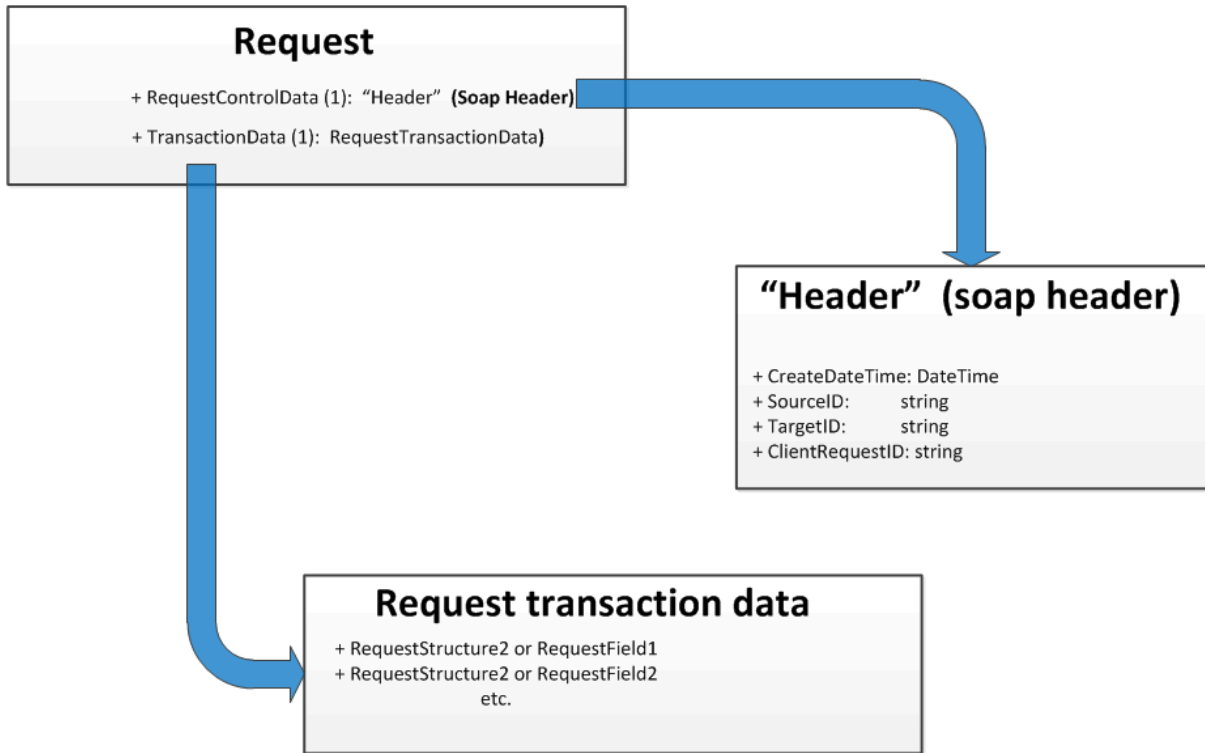
Request identifiers (**ClientRequestIDs**) are an important part of DSS Web Services. They are included in every batch web method call (sent as part of the RequestControl Structure described in the next section) to identify an individual request. The length of the **ClientRequestID** must be between 1 and 36 characters, and can be of any format. An obvious choice is to use a Globally Unique Identifier (GUID), but using an integer starting from 0 and incrementing by 1 with each web method call is also valid.

The value of the **ClientRequestID** must only be unique within an external organisation or stakeholder and it must retain uniqueness over time. It is the responsibility of the external organisation or stakeholder to ensure that all its client systems internally keep track of all previous **ClientRequestID (s)** and to synchronise generation of unique **ClientRequestID (s)** for new calls.

Every time a batch method is called, a new **ClientRequestIDs** must be sent to the server. When returning the processing results of the request, the server response will include the same **ClientRequestID** (as part of the Response Header' control structure described in the next section). In order to guarantee that the server does not process the same request twice due to a communication failure, calls to a web method providing an old **ClientRequestIDs** will result in a *Soap Fault* due to 'Duplicate' request and no new processing will be performed.

### 5.3.5 Request schema

The request schema for DSS Web Services holds all the information a client needs to call a DSS Web service method. It consists of request control data (one **'Header' Control**) sent as SOAP Header, plus request transaction data elements (one or more). This 'Header' is optional and only one transaction data element is allowed.



**Figure 1: General Request Diagram**



### 5.3.6 Response schema

Similarly, the response schema is a container for all information a DSS Web service sends to a client. It contains response control data (one **'Header' control**) sent as soap header if the request provided a 'Header', plus one response element containing the return transaction data elements.

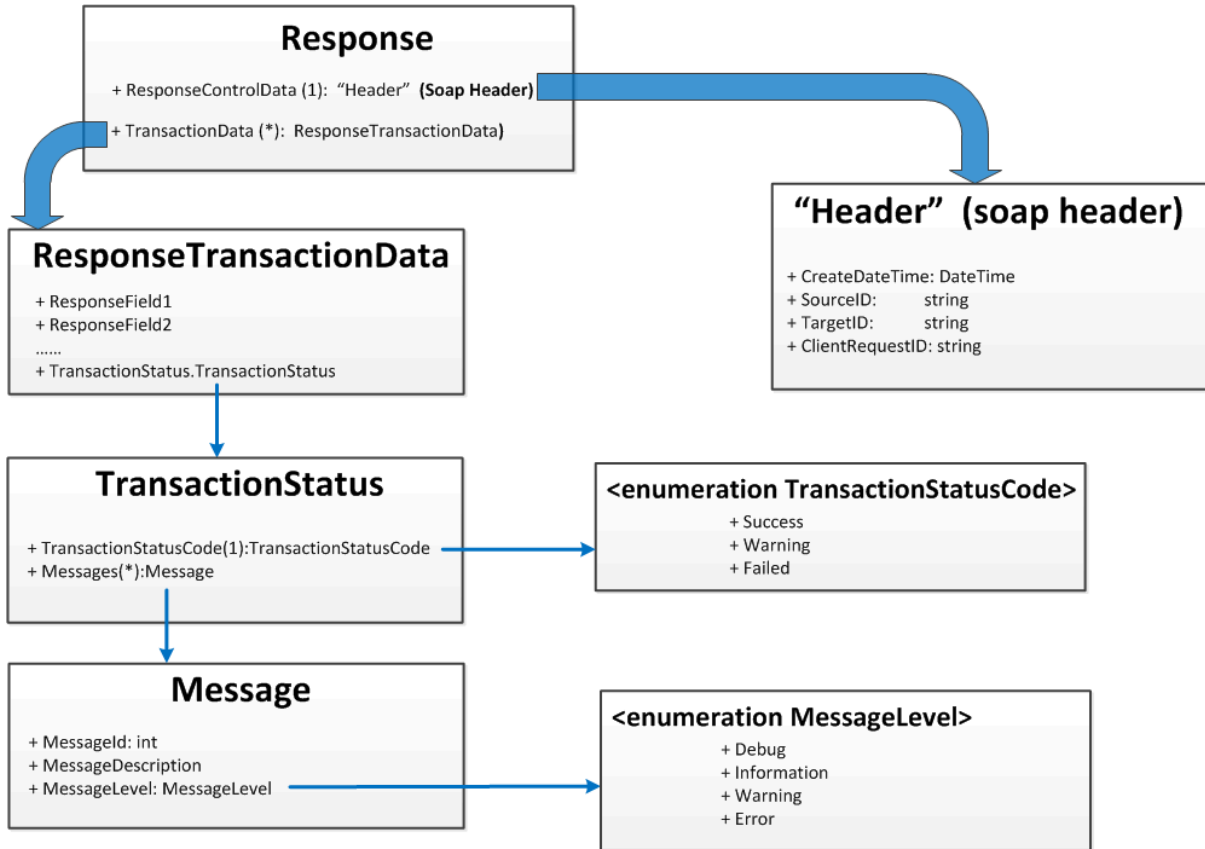


Figure 2: General response schema diagram

### 5.3.7 'Header' control

**Header** is a container for all request/response control data. The **Header** control contains the following fields:

Field Name	XML Type	Description
CreateDateTime	dateTime	Date and time on the client at the time of the call.
SourceID	string	The client's system ID. (Optional)
TargetID	string	The target system ID. (Optional)
ClientRequestID	string	The client request identifier. Max 36 chars.

### 5.3.8 Transaction data

Transaction data contains business information specific to the method being called. Request transaction data contains data required to perform the required business service, while response transaction data contains the results of processing the request. For example, in a method that returns client information (i.e. search); request transaction data will contain the client input details, while response transaction data will contain client detail information that matches the input search details.

Because each method has different input and output fields, each method defines different request and response transaction data schemas. There is however, a field that is common across transaction schemas: **TransactionStatus**.

### 5.3.9 TransactionStatus

**TransactionStatus** is an element common only to response transaction schemas. It provides information about the results of business processing for an individual transaction. The **TransactionStatus** structure always has two fields: **TransactionStatusCode** and **Messages**. **TransactionStatusCode** indicates the processing status of the transaction, and **Messages** is an array of **Message** elements. Within the context of **TransactionStatus**, each **Message** element holds business validation or business error messages for that transaction.

#### 5.3.9.1 TransactionStatus definition

Field	Mandatory Conditional Optional	Data Type	Length	Comments Validation Rules
TransactionStatusCode	Mandatory	Enumeration		See below.
Messages	Mandatory			A collection of Message elements.
Messages.Message				This element provides extended information on the status of the request. There may be no messages.
Message.MessageId	Mandatory	Integer		Identifies the message.
Message.MessageDescription	Mandatory	String		The text of the message.
Message.MessageLevel	Mandatory	Enumeration		Describes the type of message. Valid values are <b>Error</b> , <b>Information</b> , <b>Warning</b> and <b>Debug</b> . See below.

#### 5.3.9.2 TransactionStatusCode descriptions

TransactionStatusCode	Description
SUCCESS	The individual transaction processed correctly according to its respective business rules. Other response transaction data fields will contain valid output.
FAILED	The individual transaction failed processing according to business rules. Other response transaction data fields will not contain valid output.
WARNING	The individual transaction processed correctly but with warnings. Other response transaction data fields will contain valid output; however, the messages element will contain warning messages that should be investigated by the client in order to maintain data and processing integrity.

### 5.3.9.3 Messages

The **TransactionStatus** fields contain the *Messages* element. This element is used to hold any messages concerned with either the request or its constituent transactions. The **Messages** element itself only contains an array of individual **Message** elements. Each **Message** element contains three fields: **MessageId**, **MessageDescription** and **MessageLevel**. The **MessageId** and **MessageDescription** elements will be listed by the individual DSS system.

MessageSeverity	Description
DEBUG	The message is debug message. Activated only on special cases.
INFORMATION	The message is of an informational nature.
WARNING	The message provides a warning that should be investigated. When a warning message is produced, it usually implies that the request or transaction was successful, but with caveats.
ERROR	The message is produced when the request or transaction has failed. It contains reasons as to why it failed and what caused the error.

### 5.3.10 Error handling

#### 5.3.10.1 Schema and system errors.

A request received by a DSS Web service is validated against the respective schema for that method. The validation performs checks to do with the format and structure of the request fields. If the request does not comply with the schema, the returning SOAP message will not contain any response data, only a SOAP fault.

Security and System errors will also be returned as a SOAP fault. A Security error is when a client attempts to call a DSS service with invalid credentials, or the user does not have enough access to the service.

A system error is any other condition, other than business errors or schema errors. For example, sending a **ClientRequestID** on a request, which has already been used in the past, or errors in the request control data (**Header Control**).

For all SOAP Faults, DSS will place, within the *detail* element, a **Fault** element, which is the parent for all soap fault errors for all DSS Services.

The **Fault** element contains:

Field Name	XML Type	Description
ReferenceID	string	A unique reference of the fault instance (metadata/MessageID).
FaultCode	string	A unique reference of the error.
Category	string	A unique reference of the error.
FaultText	normalizedString	A friendly error message of the error that occurs. The audience of this error message is the Tier-2 operation team.
RawFaultData	anyType	The full error stack of the error including nested error.
InstanceID	string	Internal to DSS: A unique reference of the Fusion Middleware instance in the cluster. For BPEL process, it will be set to the BPEL instance ID. For organisation errors, this field will be left blank.

**Category** can take on the following values:

MessageSeverity	Description
Timeout	The call has timed-out.
Unreachable	A non-existing service has been called.
ValidationError	The message provides a warning that should be investigated. When a warning message is produced, it usually implies that the request or transaction was successful, but with caveats.
UnknownOperation	A non-existing method within a service has been called.
InternalServerError	Error within service.
Other	Unknown error.

### 5.3.10.2 Schema error example

An example of a server response to a request, which does not pass schema validation look like:

```
<?xml version="1.0" encoding="utf-8" standalone="yes" ?>
<soap:Envelope xmlns:soap="http://schemas.xmlsoap.org/soap/envelope/">
  <soap:Body>
    <soap:Fault>
      <faultcode>soap:Client</faultcode>
      <faultstring>Schema Validation Error(s)</faultstring>
      <detail>
        <Fault
xmlns:xsd="http://socialservices.dss.gov.au/common">
          <ReferenceID>xxxx-yyyy</ReferenceID>
          <FaultCode>codexxx</FaultCode>
          <Category>ValidationError</Category>
          <FaultText>
            <ValidationError>
              <Element>PostCode</Element>
              <Line>10</Line>
              <Column>3</Column>
              <Description>Invalid value according to its
data type
            </Description>
            </ValidationError>
            <ValidationError>
              <Element>FamilyName</Element>
              <Line>23</Line>
              <Column>5</Column>
              <Description>Element content is incomplete according to the
DTD/Schema.
            </Description>
            </ValidationError>
          </FaultText>
          <RawFaultData />
          <InstanceID>abac</InstanceID>
        </Fault>
      </detail>
    </soap:Fault>
  </soap:Body>
</soap:Envelope>
```

Within the **faultText** element, DSS will place a set of **ValidationError** elements, one for each error encountered. The **detail** element contains the following fields:

SOAP Fault Element Name	Description
Element	The element in which the error occurred.
Line	The line number of the incoming request where the error occurred.
Column	The column number of the incoming request where the error occurred.
Description	A brief description of why the element was invalid.

Line and column number will only be useful if the tools used to call web services allow access to view the raw SOAP request sent over the wire. In any case, the other fields (**Element** and **Description**) should be sufficient to pinpoint where the error occurred in the request.

### 5.3.10.3 System error example

An example of a server response to a request, when the client attempts to call a service with invalid credentials:

```

<?xml version="1.0" encoding="utf-8" standalone="yes" ?>
soap:Envelope xmlns:soap="http://www.w3.org/2003/05/soap-envelope">
  <soap:Body>
    <soap:Fault>
      <Code>
        <Value>soap:Sender</Value>
        <Subcode>
          <Value>DEX-000003</Value>
        </Subcode>
      </Code>
      <Reason>
        <Text xml:lang="en">The DSS Data Exchange system was
unable to authenticate your request. Please try again later or contact
the DSS Data Exchange helpdesk on 1800 020 283</Text>
      </Reason>
      <Detail>
        <Fault>
          <ReferenceID>xxx</ReferenceID>
          <FaultCode>DEX-000003</FaultCode>
          <Category>External</Category>
          <FaultText>The DSS Data Exchange system was unable to
authenticate your request. Please try again later or contact the DSS Data
Exchange helpdesk on 1800 020 283</FaultText>
          <RawFaultData/>
          <Location/>
          <TimeStamp>2023-11-06T15:25:55</TimeStamp>
        </Fault>
      </Detail>
    </soap:Fault>
  </Body>
</soap:Envelope>

```

#### 5.3.10.4 Business errors

Once the incoming request has validated successfully against the schema, the server will process each transaction according to the respective business rules. Any errors or messages for a transaction data element arising from this validation are stored in the **TransactionStatus** field.

## 5.4 Statistical Linkage Key (SLK)

Selected letters of **family name**, **given name**, **date of birth** and **gender** are used to generate a statistical linkage key to facilitate the linkage of records for statistical purposes only. The SLK ensures that individual clients will not be identified from data in the collection and comprises the alpha code derived from a client's name, their sex, and full date of birth.

### 5.4.1 SLK algorithm

The following algorithm is used to generate an SLK for use with the Data Exchange system.

- Record 2nd, 3rd and 5th letters of last name (family name).
- Record 2nd and 3rd letters of first (given) name.
- Record the date of birth as a character string of the form ddmmyyyy.

- Record the gender of the client as :
  - Code 1 for Man or male
  - Code 2 for Woman or female
  - Code 3 for Non-binary
  - Code 3 for [I/They] use a different term
  - Code 9 for Not stated
- Do not count hyphens, apostrophes, blank spaces, or any other character that may appear in a name that is not a letter of the alphabet.
- Where the name is not long enough to supply all the requested letters, fill the remaining squares with a 2 to indicate that a letter does not exist. This will occur if the first name is less than 3 characters and if the last name is less than 5 characters. If a name is too short, complete with 2's, however a 2 should always be preceded by a letter of the alphabet in both given and family name.
- Where a name or part of a name is missing, substitute a 9 to indicate that the letter is not known.
- Always use block capital letters for SLK.

#### 5.4.2 SLK regular expression

- The following regular expression may be useful for validation of your generated SLK.  
Please note: The regular expression allows 29 days in any February, it does not check for leap years.
- `([9]{3}|[A-Z]([2]{2}|[A-Z][A-Z,2]))([9]{2}|[A-Z][A-Z,2])((((0[1-9]|[1-2][0-9]))|(3[01]))((0[13578])|(1[02])))((((0[1-9]|[1-2][0-9]))|(30))((0[469])|(11)))(0[1-9]|[1-2][0-9])02)(19|2[0-9])[0-9]{2}[1 2 3 9]`



### 5.4.3 SLK examples

First Name	Last Name	Gender	Date of Birth	SLK
Jane	Citizen	Female	27 May 1963	ITZAN270519632
Joseph	Bloggs	Male	31 December 1959	LOGOS311219591
Jane	Luca	Female	27 May 1963	UC2AN270519632
Jo	O'Donnell	Female	27 May 1963	DONO2270519632
J	Bloggs	Female	27 May 1963	LOG99270519632
J	Blog	Female	27 May 1963	LO299270519632
J	O	Male	31 December 1959	99999311219591
J	Blog	Not stated	20 June 1967	LO299200619679
Joseph	Bloggs	Non-Binary	31 December 1959	LOGOS311219593
Joan	Citizen	[I/They] use a different term	15 January 2003	ITZOA150120033

## 6 Interface method definitions

The following sections detail the various methods within the interfaces provided by the Data Exchange System Web Service Interface.

### 6.1 DataCollection.Utilities

#### 6.1.1 Ping

The **Ping method** is a diagnostic method that can be used to test connectivity and authentication with the Data Exchange System Web service. This method provides no functionality other than to return an empty response. The intent of the interface is to assist in the testing and diagnosing of connection and authentication issues.

##### 6.1.1.1 Ping request message definition

Field	Mandatory Conditional Optional	Data Type	Length	Comments Validation Rules
Ping	Mandatory	N/A	N/A	An empty node to indicate a Ping Request.

##### 6.1.1.2 Ping example request message

```
<PingRequest>
</PingRequest>
```

### 6.1.1.3 Ping response message definition

If the transaction is successful, the following structure will be returned.

Field	Data Type	Length	Reference Date	Comments Validation Rules
<a href="#">TransactionStatus</a>				
VersionNo	String			The Data Exchange version number.
Environment	String			The Data Exchange environment.

### 6.1.1.4 Ping example response message

```
<PingResponse>
  <TransactionStatus>
    <TransactionStatusCode>Success</TransactionStatusCode>
    <Messages/>
  </TransactionStatus>
  <VersionNo>1.0.0.0</VersionNo>
  <Environment>Prod</Environment>
</PingResponse>
```

## 6.2 DataCollection.Reference

### 6.2.1 GetReferenceData

The **GetReferenceData** operation provides the reference data required to interact with the Data Exchange system database.

#### 6.2.1.1 GetReferenceData request message definition

Field	Mandatory Conditional Optional	Data Type	Length	Comments Validation Rules
ReferenceDataCode	Mandatory	String	N/A	Valid values are: All AboriginalOrTorresStraitIslanderOrigin AccommodationType AgBusinessType Ancestry AssessedBy AssessmentPhase AttendanceProfile Country Disability DVACardStatus EducationLevel EmploymentStatus ExitReason ExternalReferralDestination Extraltem Gender HardshipType HomelessIndicator HouseholdComposition IncomeFrequency

Field	Mandatory Conditional Optional	Data Type	Length	Comments Validation Rules
				Language MainSourceOfIncome MigrationVisaCategory MoneyBusinessCommunityEducationWorkshop NDISEligibility ParentingAgreement ParticipationType PropertyAgreement ReasonForAssistance ReferralPurpose ReferralSource ReferralType ScoreType Section60ICertificateType ServiceSetting State Topic

**6.2.1.2 GetReferenceData example request message**

```

<GetReferenceDataRequest>
  <ReferenceDataCode>Gender</ReferenceDataCode>
</GetReferenceDataRequest>
    
```

### 6.2.1.3 GetReferenceData response message definition

If the transaction is successful, the following structure will be returned.

Field	Data Type	Length	Reference Date	Comments Validation Rules
<u>TransactionStatus</u>				
Data				Collection of ReferenceData values.
ReferenceData				
Code	String			The ReferenceData value code.
Description	String			Description of ReferenceData value.
OrderNumber	Int			Default display order for reference item.
CodeType	String			Defining the reference data type that this reference data item belongs to.
UpdatedDateTime	DateTime			Last update date and time of reference data item.
MaxLastUpdatedDateTime	DateTime			Maximum Last updated date time of the result set.

### 6.2.1.4 GetReferenceData example response message

```
<GetReferenceDataResponse>
  <TransactionStatus>
    <TransactionStatusCode>Success</TransactionStatusCode>
    <Messages/>
  </TransactionStatus>
  <Data>
    <ReferenceData>
      <Code>MALE</Code>
      <Description>Man or male</Description>
      <OrderNumber>1</OrderNumber>
      <CodeType>Gender</CodeType>
      <UpdatedDateTime>2023-10-12T14:23:37.093</UpdatedDateTime>
    </ReferenceData>
    <ReferenceData>
      <Code>FEMALE</Code>
      <Description>Woman or female</Description>
      <OrderNumber>2</OrderNumber>
    </ReferenceData>
  </Data>
</GetReferenceDataResponse>
```

```

        <CodeType>Gender</CodeType>
        <UpdatedDateTime>2023-10-12T14:23:37.093</UpdatedDateTime>
    </ReferenceData>
    <ReferenceData>
        <Code>NONBINARY</Code>
        <Description>Non-binary</Description>
        <OrderNumber>4</OrderNumber>
        <CodeType>Gender</CodeType>
        <UpdatedDateTime>2023-10-19T07:49:28.497</UpdatedDateTime>
    </ReferenceData>
    <ReferenceData>
        <Code>NOTSTATED</Code>
        <Description>Not stated</Description>
        <OrderNumber>5</OrderNumber>
        <CodeType>Gender</CodeType>
        <UpdatedDateTime>2023-10-12T14:23:37.093</UpdatedDateTime>
    </ReferenceData>
    <ReferenceData>
        <Code>OTHER</Code>
        <Description>[I/They] use a different term</Description>
        <OrderNumber>6</OrderNumber>
        <CodeType>Gender</CodeType>
        <UpdatedDateTime>2023-10-19T07:49:50.66</UpdatedDateTime>
    </ReferenceData>
</Data>
<MaxLastUpdatedDateTime>2023-10-19T07:49:50.66</MaxLastUpdatedDateTime>
</GetReferenceDataResponse>

```

## 6.2.2 GetAssessmentReferenceDetails

The **GetAssessmentReferenceDetails** operation provides the assessment reference data required to interact with the Data Exchange system database.

### 6.2.2.1 GetAssessmentReferenceData request message definition

Field	Mandatory Conditional Optional	Data Type	Length	Comments Validation Rules
ScoreTypeCode	Mandatory	One occurrence of enumeration.	N/A	Please use GetOrganisationActivities method to get available AvailableAssessmentTypes.

### 6.2.2.2 GetAssessmentReferenceDetails example request message

```
<GetAssessmentReferenceDetailsRequest>
  <!--type: string-->
  <ScoreTypeCode>Group</ScoreTypeCode>
</GetAssessmentReferenceDetailsRequest>
```

### 6.2.2.3 GetAssessmentReferenceDetails response message definition

If the transaction is successful, the following structure will be returned.

Field	Data Type	Length	Reference Date	Comments Validation Rules
<a href="#">TransactionStatus</a>				
AssessmentReferenceDetail				Collection of ReferenceData values.
ScoreType	String			The AssessmentScoreType value code.
ApplicableFor	String			Session or Client.
Domains				
Domain				
DomainCode	String			The DomainCode value.
DomainDescription	String			Description of ScoreType value.
Scores				
Score				
ScoreCode	String			The Score code value.
Description	String			Description of Score value.



**6.2.2.4 GetAssessmentReferenceDetails example response message**

```

<GetAssessmentReferenceDetailsResponse>
  <TransactionStatus>
    <TransactionStatusCode>Success</TransactionStatusCode>
    <Messages/>
  </TransactionStatus>
  <AssessmentReferenceDetail>
    <ScoreType>GROUP</ScoreType>
    <ApplicableFor>Session</ApplicableFor>
    <Domains>
      <Domain>
        <DomainCode>GROUPNETWORKS</DomainCode>
        <DomainDescription>Community infrastructure and networks</DomainDescription>
        <Scores>
          <Score>
            <ScoreCode>GROUPNETWORKS1</ScoreCode>
            <Description/>
          </Score>
          <Score>
            <ScoreCode>GROUPNETWORKS2</ScoreCode>
            <Description/>
          </Score>
          <Score>
            <ScoreCode>GROUPNETWORKS3</ScoreCode>
            <Description/>
          </Score>
          <Score>
            <ScoreCode>GROUPNETWORKS4</ScoreCode>
            <Description/>
          </Score>
          <Score>
            <ScoreCode>GROUPNETWORKS5</ScoreCode>
            <Description/>
          </Score>
        </Scores>
      </Domain>
      <Domain>

```

```

        <DomainCode>GROUPSKILLS</DomainCode>
<DomainDescription>Group / community knowledge, skills, attitudes and behaviours</DomainDescription>
    <Scores>
        <Score>
            <ScoreCode>GROUPSKILLS1</ScoreCode>
            <Description/>
        </Score>
        <Score>
            <ScoreCode>GROUPSKILLS2</ScoreCode>
            <Description/>
        </Score>
        <Score>
            <ScoreCode>GROUPSKILLS3</ScoreCode>
            <Description/>
        </Score>
        <Score>
            <ScoreCode>GROUPSKILLS4</ScoreCode>
            <Description/>
        </Score>
        <Score>
            <ScoreCode>GROUPSKILLS5</ScoreCode>
            <Description/>
        </Score>
    </Scores>
</Domain>
<Domain>
    <DomainCode>ORGSKILLS</DomainCode>
<DomainDescription>Organisational knowledge, skills and practices</DomainDescription>
    <Scores>
        <Score>
            <ScoreCode>ORGSKILLS1</ScoreCode>
            <Description/>
        </Score>
        <Score>
            <ScoreCode>ORGSKILLS2</ScoreCode>
            <Description/>
        </Score>
    </Scores>

```

```
        <ScoreCode>ORGSKILLS3</ScoreCode>
        <Description/>
    </Score>
    <Score>
        <ScoreCode>ORGSKILLS4</ScoreCode>
        <Description/>
    </Score>
    <Score>
        <ScoreCode>ORGSKILLS5</ScoreCode>
        <Description/>
    </Score>
</Scores>
</Domain>
</Domains>
</AssessmentReferenceDetail>
</GetAssessmentReferenceDetailsResponse>
```

## 6.3 DataCollection.Organisation

### 6.3.1 GetOrganisation

The GetOrganisation operation retrieves the Organisation details for the user executing the operation.

#### 6.3.1.1 GetOrganisation request message definition

Field	Mandatory Conditional Optional	Data Type	Length	Reference Date	Comments Validation Rules
GetOrganisation	Mandatory	N/A	N/A		An empty node to indicate a GetOrganisation Request.

#### 6.3.1.2 GetOrganisation example request message

```
<GetOrganisationRequest>
</GetOrganisationRequest>
```

#### 6.3.1.3 GetOrganisation response message definition

If the transaction is successful, the following structure will be returned.

Field	Data Type	Length	Reference Date	Comments Validation Rules
<u>TransactionStatus</u>				
Organisation				
Name	String			Organisation Name.
ABN	String			Organisation Australian Business Number.
ArrayOfOutlet	Array of Organisation Outlets			

Field	Data Type	Length	Reference Date	Comments Validation Rules
Outlet	Array of Outlets			
OutletId	string			
Name				
OutletDetails				
Address				
Suburb	string			
State	string			
PostCode	string			
AddressLine1	string			
AddressLine2	string			
OrganisationActivities	Array of Organisation Activities			
OrganisationActivity				
OrganisationActivityId	int			
ProgramActivityName	string			
StartDate	date			
EndDate				
DeliveringOnBehalfOfAnotherOrganisation	Boolean			
HasPartnershipEnded	Boolean			
DeliveryPartners	Array of Delivery Partner			
DeliveryPartner				
PartnerOrganisationName	string			

Field	Data Type	Length	Reference Date	Comments Validation Rules
PartnerOrganisationExternalSystemId	string			
PartnerOrganisationABN	string			

#### 6.3.1.4 GetOrganisation example response message

```

<GetOrganisationResponse>
<TransactionStatus>
  <TransactionStatusCode>Success</TransactionStatusCode>
  <Messages/>
</TransactionStatus>
<Organisation>
  <Name>Organisation Name</Name>
  <ABN>57370813702</ABN>
  <ArrayOfOutlet>
    <Outlet>
      <OutletId>8</OutletId>
      <Name>AAA Australian Support Services</Name>
      <OutletDetails>
        <Address>
          <Suburb>GLENELG NORTH</Suburb>
          <State>SA</State>
          <PostCode>5045</PostCode>
          <AddressLine1/>
          <AddressLine2>10 Darwin Street</AddressLine2>
        </Address>
      </OutletDetails>
    </Outlet>
  </ArrayOfOutlet>
  <OrganisationActivities>
    <OrganisationActivity>
      <OrganisationActivityId>59</OrganisationActivityId>
      <ProgramActivityName>Children's Contact Services (for AAA Help Mod)</ProgramActivityName>
      <StartDate>2012-01-01T00:00:00</StartDate>
      <EndDate>2015-12-31T00:00:00</EndDate>
    </OrganisationActivity>
  </OrganisationActivities>
</Organisation>

```

```

    <DeliveringOnBehalfOfAnotherOrganisation>true</DeliveringOnBehalfOfAnotherOrganisation>
    <HasPartnershipEnded>false</HasPartnershipEnded>
    <DeliveryPartners>
      <DeliveryPartner>
        <PartnerOrganisationName>AAA Help Mod</PartnerOrganisationName>
        <PartnerOrganisationExternalSystemId/>
        <PartnerOrganisationABN>48123123124</PartnerOrganisationABN>
      </DeliveryPartner>
    </DeliveryPartners>
  </OrganisationActivity>
</OrganisationActivities>
</Organisation>
</GetOrganisationResponse>

```

### 6.3.2 GetOrganisationActivities

The **GetOrganisationActivities** operation retrieves the organisation activity details for the user executing the operation.

#### 6.3.2.1 GetOrganisationActivities request message definition

Field	Mandatory Conditional Optional	Data Type	Length	Reference Date	Comments Validation Rules
GetOrganisationActivities	Mandatory	N/A	N/A		An empty node to indicate a GetOrganisationActivities Request.

#### 6.3.2.2 GetOrganisationActivities example request message

```

<GetOrganisationActivitiesRequest>
</GetOrganisationActivitiesRequest>

```

#### 6.3.2.3 GetOrganisationActivities response message definition

If the transaction is successful, the following structure will be returned.

Field	Data Type	Length	Reference Date	Comments Validation Rules
<u>TransactionStatus</u>				

Field	Data Type	Length	Reference Date	Comments Validation Rules
OrganisationActivities	Array of Organisation Activities			
OrganisationActivity				
OrganisationActivityId	int			
ProgramActivityName	string			
StartDate	date			OrganisationActivity start date.
EndDate	date			OrganisationActivity end date.
DeliveringOnBehalfOfAnotherOrganisation	Boolean			
HasPartnershipEnded	Boolean			
DeliveryPartners	Array of Delivery partner			
DeliveryPartner				
PartnerOrganisationName	string			
PartnerOrganisationExternalSystemId	string			
PartnerOrganisationABN	string			
ActivityServiceTypes				
ServiceType				
ServiceTypeId	int			Service Type Id to be used with session.
Name	string			Service Type Name.
ServiceTypeGroupName	string			
ServiceTypeSpecificRequirements				
ServiceTypeSpecificRequirement				
Code	string			



Field	Data Type	Length	Reference Date	Comments Validation Rules
Description	string			
AffiliateWith	string			
AvailableFrom	date			Start date of Service Type Specific Requirement availability for sessions.
AvailableTo	date			End date of Service Type Specific Requirement availability for sessions. Note: If not present or null, then end is not specified and Service Type Specific Requirement is assumed to be applicable from the specified start date.
ActivitySpecificRequirements				
ActivitySpecificRequirement				
Code	string			
Description	string			
AffiliateWith	string			
AvailableFrom	date			Start date of Activity Specific Requirement availability for sessions.
AvailableTo	date			End date of Activity Specific Requirement availability for sessions. Note: if not present or null, then end is not specified and Activity Specific Requirement is assumed to be applicable from the specified start date.
AvailableAssessmentTypes				
AvailableAssessmentType				
AssessmentTypeCode	string			
Description	string			

Field	Data Type	Length	Reference Date	Comments Validation Rules
AvailableForEntity	string			
AvailableFrom	date			Start date of Assessment Type availability for sessions.
AvailableTo	date			End date of Assessment Type availability for sessions. Note: if not present or null, then end is not specified and Activity Specific Requirement is assumed to be applicable from the specified start date.

#### 6.3.2.4 GetOrganisationActivities example response message

```

<GetOrganisationActivitiesResponse>
<TransactionStatus>
  <TransactionStatusCode>Success</TransactionStatusCode>
  <Messages/>
</TransactionStatus>
<OrganisationActivities>
  <OrganisationActivity>
    <OrganisationActivityId>59</OrganisationActivityId>
    <ProgramActivityName>Children's Contact Services (for AAA Help Mod)</ProgramActivityName>
    <StartDate>2012-01-01T00:00:00</StartDate>
    <EndDate>2015-12-31T00:00:00</EndDate>
    <DeliveringOnBehalfOfAnotherOrganisation>>true</DeliveringOnBehalfOfAnotherOrganisation>
    <HasPartnershipEnded>>false</HasPartnershipEnded>
    <DeliveryPartners>
      <DeliveryPartner>
        <PartnerOrganisationName>AAA Help Mod</PartnerOrganisationName>
        <PartnerOrganisationExternalSystemId/>
        <PartnerOrganisationABN>48123123124</PartnerOrganisationABN>
      </DeliveryPartner>
    </DeliveryPartners>
    <ActivityServiceTypes>
      <ServiceType>

```

```

    <ServiceTypeId>39</ServiceTypeId>
    <Name>Psychologist</Name>
    <ServiceTypeGroupName>Allied Health and Therapy Services</ServiceTypeGroupName>
    <ServiceTypeSpecificRequirements>
      <ServiceTypeSpecificRequirement>
        <Code>ASSISTANCEMINUTES</Code>
        <Description>When applied to a service type "Time" property on session is required
and must be supplied with a valid value to record a new session or update an existing session.</Description>
        <AffiliateWith>Session</AffiliateWith>
        <AvailableFrom>2014-07-01T00:00:00</AvailableFrom>
      </ServiceTypeSpecificRequirement>
    </ServiceTypeSpecificRequirements>
    <AvailableFrom>2014-07-01T00:00:00</AvailableFrom>
  </ServiceType>
</ActivityServiceTypes>
<ActivitySpecificRequirements>
  <ActivitySpecificRequirement>
    <Code>TOPIC</Code>
    <Description>When applied to an Activity, "Topic" property on Session must be
supplied.</Description>
    <AffiliateWith>Session</AffiliateWith>
    <AvailableFrom>2014-07-01T00:00:00</AvailableFrom>
  </ActivitySpecificRequirement>
</ActivitySpecificRequirements>
<AvailableAssessmentTypes>
  <AvailableAssessmentType>
    <AssessmentTypeCode>CIRCUMSTANCES</AssessmentTypeCode>
    <Description>Circumstances</Description>
    <AvailableForEntity>Client</AvailableForEntity>
    <AvailableFrom>2014-07-01T00:00:00</AvailableFrom>
  </AvailableAssessmentType>
</AvailableAssessmentTypes>
</OrganisationActivity>
</OrganisationActivities>
</GetOrganisationActivitiesResponse>

```

### 6.3.3 GetOutlet

The **GetOutlet** operation retrieves the outlet details registered with the Data Exchange.

#### 6.3.3.1 GetOutlet request message definition

Field	Mandatory Conditional Optional	Data Type	Length	Reference Date	Comments Validation Rules
OutletId	Mandatory	Int	N/A		DEX's OutletId. The user should have access to the Outlet.

### 6.3.3.2 GetOutlet example request message

```
<GetOutletRequest>
  <!--type int-->
  <OutletId>606</OutletId>
</GetOutletRequest>
```

### 6.3.3.3 GetOutlet response message definition

If the transaction is successful, the following structure will be returned.

Field	Data Type	Length	Reference Date	Comments Validation Rules
<a href="#">TransactionStatus</a>				
Outlet				
OutletId	Int			DEX's OutletId.
Name	String			DEX's Outlet Name.
OutletDetails				
Address				Outlet Location.
Suburb	String			
State	String			
Postcode	String			
AddressLine1	String			
AddressLine2	String			

### 6.3.3.4 GetOutlet example response message

```
<GetOutletResponse>
  <TransactionStatus>
    <TransactionStatusCode>Success</TransactionStatusCode>
    <Messages/>
  </TransactionStatus>
  <Outlet>
    <OutletId>606</OutletId>
    <Name>Kalparrin Community Inc</Name>
    <OutletDetails>
      <Address>
        <Suburb>MURRAY BRIDGE</Suburb>
        <State>SA</State>
        <Postcode>5253</Postcode>
        <AddressLine1>1 Main Street</AddressLine1>
        <AddressLine2/>
      </Address>
    </OutletDetails>
  </Outlet>
</GetOutletResponse>
```

## 6.3.4 GetOutletActivities

The **GetOutletActivities** operation retrieves all the active **OutletActivities** registered with the Data Exchange to which user has access.

### 6.3.4.1 GetOutletActivities request message definition

Field	Mandatory Conditional Optional	Data Type	Length	Reference Date	Comments Validation Rules
GetOutletActivities	Mandatory	N/A	N/A		An empty node to indicate a GetOutletActivities Request.

### 6.3.4.2 GetOutletActivities example request message

```
<GetOutletActivitiesRequest>
</GetOutletActivitiesRequest>
```

### 6.3.4.3 GetOutletActivities response message definition

If the transaction is successful, the following structure will be returned.

Field	Data Type	Length	Reference Date	Comments Validation Rules
<a href="#">TransactionStatus</a>				
OutletActivities	Array (OutletActivity)			
OutletActivity				
OutletActivityId	Int			DEX's OutletActivityId.
OutletId	Int			DEX's OutletId.
OutletName	String			DEX's Outlet Name.
ActivityName	String			DEX's Activity Name.
ProgramName	String			DEX's Program name.
OrganisationActivityId	Int			Organisation Activity Id.
StartDate	Date			StartDate of OutletActivity.
EndDate	Date			EndDate of OutletActivity.
Status	String			

**6.3.4.4 GetOutletActivities example response message**

```

<GetOutletActivitiesResponse>
  <TransactionStatus>
    <TransactionStatusCode>Success</TransactionStatusCode>
    <Messages/>
  </TransactionStatus>
  <OutletActivities>
    <OutletActivity>
      <OutletActivityId>219</OutletActivityId>
      <OutletId>171</OutletId>
      <OutletName>Outlet Name</OutletName>
      <ActivityName>Activity Name</ActivityName>
      <ProgramName>Family Support</ProgramName>
      <OrganisationActivityId>1194</OrganisationActivityId>
      <StartDate>2009-07-01T000000</StartDate>
      <EndDate>2014-06-10T000000</EndDate>
      <Status>APPROVED</Status>
    </OutletActivity>
    <OutletActivity>
      <OutletActivityId>993</OutletActivityId>
      <OutletId>171</OutletId>
      <OutletName>Outlet Name</OutletName>
      <ActivityName>Activity Name</ActivityName>
      <ProgramName>Family Support</ProgramName>
      <OrganisationActivityId>1195</OrganisationActivityId>
      <StartDate>2011-07-01T000000</StartDate>
      <EndDate>2014-06-30T000000</EndDate>
      <Status>APPROVED</Status>
    </OutletActivity>
  </OutletActivities>
</GetOutletActivitiesResponse>

```



### 6.3.5 GetUser

The GetUser operation retrieves the User details for the user executing the operation.

#### 6.3.5.1 GetUser request message definition

Field	Mandatory Conditional Optional	Data Type	Length	Reference Date	Comments Validation Rules
GetUser	Mandatory	N/A	N/A		An empty node to indicate a GetUser Request.

#### 6.3.5.2 GetUser example request message

```
<GetUserRequest>
</GetUserRequest>
```

#### 6.3.5.3 GetUser response message definition

If the transaction is successful, the following structure will be returned.

Field	Data Type	Length	Reference Date	Comments Validation Rules
<u>TransactionStatus</u>				
User				
UserName	String			User Name.
FirstName	String			Frist Name of the user.
FamilyName	String			Family Name of the user.
Phone	String			Phone number of the user.
Email	String			Email address of the user.
Organisation				
Name	String			Organisation Name.
ABN	String			Organisation Australian Business Number.

Field	Data Type	Length	Reference Date	Comments Validation Rules
OutletActivities	Array (OutletActivity)			
OutletActivityId	Int			DEX's Outlet Activity Identifier.
OutletId	Int			DEX's Outlet Identifier.
OutletName	String			DEX's Outlet Name.
ActivityName	String			Activity Name.
ProgramName	String			Program Name.
OrganisationActivityId	Int			Organisation activity Id.
StartDate	Date			StartDate of OutletActivity.
EndDate	Date			EndDate of OutletActivity.
Status	string			

#### 6.3.5.4 GetUser example response message

```

<GetUserResponse>
  <TransactionStatus>
    <TransactionStatusCode>Success</TransactionStatusCode>
  </TransactionStatus>
  <User>
    <UserName>jb0012@production.local</UserName>
    <FirstName>Jo</FirstName>
    <FamilyName>Blog</FamilyName>
    <Phone/>
    <Email/>
    <Organisation>
      <Name>Warmun Community (Turkey Creek) Inc</Name>
      <ABN>57370813702</ABN>
    </Organisation>
    <OutletActivities>
      <OutletActivity>

```

```
<OutletActivityId>219</OutletActivityId>
<OutletId>171</OutletId>
<OutletName>Warmun Early Learning Centre</OutletName>
<ActivityName>Family Law Counselling</ActivityName>
<ProgramName>Family Support (Bill 1)</ProgramName>
<OrganisationActivityId>1195</OrganisationActivityId>
<StartDate>2009-07-01T00:00:00</StartDate>
<EndDate>2014-06-10T00:00:00</EndDate>
<Status>APPROVED</Status>
</OutletActivity>
<OutletActivity>
  <OutletActivityId>993</OutletActivityId>
  <OutletId>171</OutletId>
  <OutletName>Warmun Early Learning Centre</OutletName>
  <ActivityName>Financial capability</ActivityName>
  <ProgramName>Family Support (Bill 1)</ProgramName>
  <OrganisationActivityId>1195</OrganisationActivityId>
  <StartDate>2011-07-01T00:00:00</StartDate>
  <EndDate>2014-06-30T00:00:00</EndDate>
  <Status>APPROVED</Status>
</OutletActivity>
</OutletActivities>
</User>
</GetUserResponse>
```

## 6.4 DataCollection.Recipient

### 6.4.1 AddClient

The **AddClient** operation is to be used when an organisation wishes to submit data to the Data Exchange in order to create and register a Client with their organisation. During the creation process, validation of the data submitted by the organisation will be undertaken. If the validation of the data is unsuccessful, an error will be generated and no record will be created.

A client should only be registered once with an organisation. A registered client can be attached to many client cases.

IMPORTANT: The system does not identify 'pseudonym' as a field. All instances of 'pseudonym' must be spelled as 'psuedonym'. This is due to an error in the initial system build.

#### 6.4.1.1 AddClient request message definition

Field	Mandatory Conditional Optional	Data Type	Length	Reference Date	Comments Validation Rules
ClientId	Mandatory	String	30		Organisation's Client Id. It has to be unique for all the clients registered with the Organisation. It is <b>not</b> case sensitive. A client's name, part of a client's name, or other identifiable information should not be used as a ClientId under any circumstances.
SLK	Conditional Mandatory	String	14		Must be supplied if ConsentToProvideDetails is false.
ConsentToProvideDetails	Mandatory	Boolean			Client consent for DSS to collect personal information from organisations for storage on the Data Exchange.
ConsentedForFutureContacts	Mandatory	Boolean			Client consent to future contact for survey / research / evaluation.
GivenName	Conditional Mandatory	String	30		Must be supplied if ConsentToProvideDetails is true.

Field	Mandatory Conditional Optional	Data Type	Length	Reference Date	Comments Validation Rules
FamilyName	Conditional Mandatory	String	30		Must be supplied if ConsentToProvideDetails is true.
IsUsingPsuedonym	Mandatory	Boolean			true = If name specified is a Psuedonym name false = If name specified is not a Psuedonym name.
BirthDate	Mandatory	DateTime			If IsBirthDateAnEstimate is true then it should be in the format of 'yyyy-01-01'. If IsBirthDateAnEstimate is false then it should be the real birth date in the format of 'yyyy-mm-dd'.
IsBirthDateAnEstimate	Mandatory	Boolean			true = the birth date is just an estimate false = the birth date is the real birth date.
GenderCode	Mandatory	String			Must be a valid Gender code retrieved using GetReferenceData operation.
GenderDetails	Optional	String	100		Optional when 'OTHER' GenderCode is used. If GenderDetails are provided when another GenderCode is provided, then field contents will not be saved and a warning will be generated.
ResidentialAddress					
Suburb	Mandatory	String	50		Suburb from residential address of a client.
State	Mandatory	String	3		State from residential address of a client.
Postcode	Mandatory	String	4		Postcode from residential address of a client.

Field	Mandatory Conditional Optional	Data Type	Length	Reference Date	Comments Validation Rules
AddressLine1	Optional	String	180		Street address from residential address of a client.
AddressLine2	Optional	String	180		Overflow from Address line 1 from residential address of a client.
CountryOfBirthCode	Mandatory	String			Must be a valid Country code retrieved using GetReferenceData operation.
LanguageSpokenAtHomeCode	Mandatory	String			Must be a valid Language code retrieved using GetReferenceData operation.
AboriginalOrTorresStraitIslanderOriginCode	Mandatory	String			Must be a valid AboriginalOrTorresStraitIslanderOrigin code retrieved using GetReferenceData operation.
HasDisabilities	Mandatory	Boolean			If True, then minimum of one Disability code is required. If False, then no Disability code should be sent.
HomelessIndicatorCode	Optional	String			Must be a valid HomelessIndicatorCode retrieved using GetReferenceData operation.
HouseholdCompositionCode	Conditional Optional	String			Must be a valid HouseholdCompositionCode retrieved using GetReferenceData operation. Also named as 'Living arrangements'.
MainSourceOfIncomeCode	Optional	String			Must be a valid MainSourceOfIncomeCode retrieved using GetReferenceData operation.

Field	Mandatory Conditional Optional	Data Type	Length	Reference Date	Comments Validation Rules
IncomeFrequencyCode	Optional	String			Must be a valid IncomeFrequency code retrieved using GetReferenceData operation.
IncomeAmount	Optional	Int			Client income.
FirstArrivalMonth	Optional	String			Month Client first arrived in Australia Full name of the month: January, February, March, April, May, June, July, August, September, October, November, December
FirstArrivalYear	Optional	Int			Year Client first arrived in Australia.
MigrationVisaCategoryCode	Optional	String			Must be a valid MigrationVisaCategoryCode retrieved using GetReferenceData operation.
AncestryCode	Optional	String			Must be a valid AncestryCode retrieved using GetReferenceData operation.
AccommodationTypeCode	Conditional Optional	String			Must be a valid AccommodationType retrieved using GetReferenceData operation.
DVACardStatusCode	Conditional Optional	String			Must be a valid DVACardStatus retrieved using GetReferenceData operation.
HasCarer	Conditional Optional	Boolean			true = If client has a carer false = If client does not have a carer
EducationLevelCode	Optional	String			Must be a valid EducationLevelCode retrieved using GetReferenceData operation.

Field	Mandatory Conditional Optional	Data Type	Length	Reference Date	Comments Validation Rules
EmploymentStatusCode	Optional	String			Must be a valid EmploymentStatusCode retrieved using GetReferenceData operation.
IsClientACarer	Optional	Boolean			true = If client is a carer false = If client is not a carer
NDISEligibilityCode	Optional	String			Must be a valid NDISEligibilityCode retrieved using GetReferenceData operation.
Disabilities	Optional				
DisabilityCode	Mandatory	String			Must be a valid DisabilityCode retrieved using GetReferenceData operation.
HasValidatedForDuplicateClient		Boolean			

#### 6.4.1.2 AddClient example request message

```

<AddClientRequest>
  <Client>
    <!--type: string-->
    <ClientId>CL0012</ClientId>
    <!--type: string-->
    <SLK>LO2OE211220003</SLK>
    <!--type: Boolean-->
    <ConsentToProvideDetails>true</ConsentToProvideDetails>
    <!--type: Boolean-->
    <ConsentedForFutureContacts>true</ConsentedForFutureContacts>
    <!--type: string-->
    <GivenName>Joe</GivenName>
    <!--type: string-->
    <FamilyName>Blog</FamilyName>
    <!--type: Boolean-->
    <IsUsingPsuedonym>true</IsUsingPsuedonym>
  </Client>
</AddClientRequest>

```



```

<!--type: dateTime-->
<BirthDate>2000-12-21T00:00:00</BirthDate>
<!--type: Boolean-->
<IsBirthDateAnEstimate>>false</IsBirthDateAnEstimate>
<!--type: string-->
<GenderCode>OTHER</GenderCode>
<GenderDetails>Genderfluid</GenderDetails>
<ResidentialAddress>
  <!--type: string-->
  <Suburb>Calwell</Suburb>
  <!--type: string-->
  <State>ACT</State>
  <!--type: string-->
  <Postcode>2905</Postcode>
  <!--Optional:-->
  <!--type: string-->
  <AddressLine1>1 temp pl</AddressLine1>
  <!--Optional:-->
  <!--type: string-->
  <AddressLine2/>
</ResidentialAddress>
<!--type: string-->
<CountryOfBirthCode>1101</CountryOfBirthCode>
<!--type: string-->
<LanguageSpokenAtHomeCode>1201</LanguageSpokenAtHomeCode>
<!--type: string-->
<AboriginalOrTorresStraitIslanderOriginCode>NOTSTATED</AboriginalOrTorresStraitIslanderOriginCode>
<!--type: Boolean-->
<HasDisabilities>>true</HasDisabilities>
<!--Optional:-->
<!--type: string-->
<HomelessIndicatorCode>ATRISK</HomelessIndicatorCode>
<!--Optional:-->
<!--type: string-->
<HouseholdCompositionCode>SINGLE</HouseholdCompositionCode>
<!--Optional:-->
<!--type: string-->
<MainSourceOfIncomeCode>EMPLOYED</MainSourceOfIncomeCode>

```

```

<!--Optional:-->
<!--type: string-->
<IncomeFrequencyCode>WEEKLY</IncomeFrequencyCode>
<!--Optional:-->
<!--type: int-->
<IncomeAmount>300</IncomeAmount>
<!--Optional:-->
<!--type: Month - enumeration:
[January, February, March, April, May, June, July, August, September, October, November, December] -->
<FirstArrivalMonth>January</FirstArrivalMonth>
<!--Optional:-->
<!--type: int-->
<FirstArrivalYear>1999</FirstArrivalYear>
<!--Optional:-->
<!--type: string-->
<MigrationVisaCategoryCode>HUMANITARIAN</MigrationVisaCategoryCode>
<!--Optional:-->
<!--type: string-->
<AncestryCode>1103</AncestryCode>
<!--Optional:-->
<!--type: string-->
<AccommodationTypeCode>25</AccommodationTypeCode>
<!--Optional:-->
<!--type: string-->
<DVACardStatusCode>GOLD</DVACardStatusCode>
<!--Optional:-->
<!--type: Boolean-->
<HasCarer>>false</HasCarer>
<!--Optional:-->
<!--type: string-->
<EducationLevelCode>PREPRIMARY</EducationLevelCode>
<!--Optional:-->
<!--type: string-->
<EmploymentStatusCode>WORKFULLTIME</EmploymentStatusCode>
<!--Optional:-->
<!--type: Boolean-->
<IsClientACarer>>false</IsClientACarer>
<!--Optional:-->

```

```

<!--type: string-->
<NDISEligibilityCode>ELIGIBLE</NDISEligibilityCode>
<Disabilities>
  <!--Zero or more repetitions:-->
  <!--type: string-->
  <dex:DisabilityCode>learning</dex:DisabilityCode>
</Disabilities>
</Client>
<!--type: Boolean-->
<HasValidatedForDuplicateClient>>true</HasValidatedForDuplicateClient>
</AddClientRequest>

```

#### 6.4.1.3 AddClient response message definition

If the transaction is successful, the following structure will be returned.

Field	Data Type	Reference Date	Comments Validation Rules
<a href="#">TransactionStatus</a>			

#### 6.4.1.4 AddClient example response message

```

<AddClientResponse>
  <TransactionStatus>
    <TransactionStatusCode>Success</TransactionStatusCode>
    <Messages/>
  </TransactionStatus>
</AddClientResponse>

```

## 6.4.2 GetClient

Retrieves Data Exchange details for Client registered for the user's Organisation.

#### 6.4.2.1 GetClient request message definition

Field	Mandatory Conditional Optional	Data Type	Length	Reference Date	Comments Validation Rules
ClientId	Mandatory	string	30		Organisation's Client Id.

#### 6.4.2.2 GetClient example request message

```
<GetClientRequest>
  <!--type: string-->
  <ClientId>CL0012</ClientId>
</GetClientRequest>
```

#### 6.4.2.3 GetClient response message definition

Field	Data Type	Reference Date	Comments Validation Rules
<u>TransactionStatus</u>			
Client			
ClientId	String		Organisation's Client Id.
SLK	String		Supplied Or Generated SLK.
ConsentToProvideDetails	Boolean		Client consent for DSS to collect personal information from organisations for storage on the Data Exchange.
ConsentedForFutureContacts	Boolean		Client consent to future contact for survey / research / evaluation.
GivenName	String		Given name for client.
FamilyName	String		Family name for client.
IsUsingPsuedonym	Boolean		Specifying whether the name is a psuedonym name.
BirthDate	DateTime		Client's date of birth.
IsBirthDateAnEstimate	Boolean		Specifying whether the date of birth is an Estimate.
GenderCode	String		Client's Gender code.

Field	Data Type	Reference Date	Comments Validation Rules
GenderDetails	String		Client's Gender Details
ResidentialAddress			
Suburb	String		Suburb from residential address of a client.
State	String		State from residential address of a client.
Postcode	String		Postcode from residential address of a client.
AddressLine1	String		Street address from residential address of a client.
AddressLine2	String		Overflow from Address line 1 from residential address of a client.
CountryOfBirthCode	String		The CountryOfBirth code value.
LanguageSpokenAtHomeCode	String		The LanguageSpokenAtHome code value.
AboriginalOrTorresStraitIslanderOriginCode	String		The AboriginalOrTorresStraitIslanderOrigin code value.
HasDisabilities	Boolean		If True, then minimum of one Disability code is required. If False, then no Disability code should be sent.
HomelessIndicatorCode	String		The HomelessIndicator code value.
HouseholdCompositionCode	String		The HouseholdComposition code value.
MainSourceOfIncomeCode	String		The MainSourceOfIncome code value.
IncomeFrequencyCode	String		The IncomeFrequency code value.
IncomeAmount	Int		Client income.
FirstArrivalMonth	String		Month Client first arrived in Australia. Full name of the month: January, February, March, April, May, June, July, August, September, October, November, December
FirstArrivalYear	Int		Year Client first arrived in Australia.
MigrationVisaCategoryCode	String		The MigrationVisaCategoryCode value.
AncestryCode	String		The AncestryCode value.

Field	Data Type	Reference Date	Comments Validation Rules
AccommodationTypeCode	String		The AccommodationType value.
DVACardStausCode	String		The DVACardStatus value.
HasCarer	Boolean		true = If client has a carer false = If client does not have a carer
EducationLevelCode	String		The EducationLevelCode value.
EmploymentStatusCode	String		The EmploymentStatusCode value.
IsClientACarer	Boolean		true = If client is a carer false = If client is not a carer
NDISEligibilityCode	String		The NDISEligibilityCode value.
Disabilities	Array		
DisabilityCode	String		The DisabilityCode value.
CreatedDateTime	DateTime		DateTime Client was created in the Data Exchange's database.
Cases	Array		
Caseld	String		Cases on which the ClientId is attached will be retrieved.

#### 6.4.2.4 GetClient example response message

```
<GetClientResponse>
  <TransactionStatus>
    <TransactionStatusCode>Success</TransactionStatusCode>
    <Messages/>
  </TransactionStatus>
  <Client>
    <ClientId>CL0012</ClientId>
    <SLK>LO20E240220143</SLK>
    <ConsentToProvideDetails>true</ConsentToProvideDetails>
    <ConsentedForFutureContacts>true</ConsentedForFutureContacts>
    <ConsentGivenToDepartment>true</ConsentGivenToDepartment>
    <GivenName>Joe</GivenName>
```

```

<FamilyName>Blog</FamilyName>
<IsUsingPsuedonym>>false</IsUsingPsuedonym>
<BirthDate>2014-02-24T00:00:00</BirthDate>
<IsBirthDateAnEstimate>>false</IsBirthDateAnEstimate>
<GenderCode>OTHER</GenderCode>
<GenderDetail>Genderfluid</GenderDetails>
<ResidentialAddress>
  <Suburb>Forde</Suburb>
  <State>ACT</State>
  <Postcode>2914</Postcode>
  <AddressLine1/>
  <AddressLine2/>
</ResidentialAddress>
<CountryOfBirthCode>1101</CountryOfBirthCode>
<LanguageSpokenAtHomeCode>1201</LanguageSpokenAtHomeCode>
<AboriginalOrTorresStraitIslanderOriginCode>NO</AboriginalOrTorresStraitIslanderOriginCode>
<HasDisabilities>>true</HasDisabilities>
<HomelessIndicatorCode>ATRISK</HomelessIndicatorCode>
<HouseholdCompositionCode>SINGLE</HouseholdCompositionCode>
<MainSourceOfIncomeCode>NIL</MainSourceOfIncomeCode>
<IncomeFrequencyCode>WEEKLY</IncomeFrequencyCode>
<IncomeAmount>300</IncomeAmount>
<FirstArrivalMonth>January</FirstArrivalMonth>
<FirstArrivalYear>2002</FirstArrivalYear>
<MigrationVisaCategoryCode>HUMANITARIAN</MigrationVisaCategoryCode>
<AncestryCode>2102</AncestryCode>
<AccommodationTypeCode>1</AccommodationTypeCode>
<DVACardStatusCode>1</DVACardStatusCode>
<HasCarer>>false</HasCarer>
<EducationLevelCode>PREPRIMARY</EducationLevelCode>
<EmploymentStatusCode>WORKFULLTIME</EmploymentStatusCode>
<IsClientACarer>>false</IsClientACarer>
<NDISEligibilityCode>ELIGIBLE</NDISEligibilityCode>
<Disabilities>
  <DisabilityCode>PHYSICAL</DisabilityCode>
</Disabilities>
<CreatedDateTime>2015-06-17T14:47:07.407</CreatedDateTime>
<Cases>

```

```

        <CaseId>0054</CaseId>
        <CaseId>0007</CaseId>
    </Cases>
</Client>
</GetClientResponse>
    
```

### 6.4.3 SearchClient

**SearchClient** operation can be used to search for the clients registered for the user’s organisation based on the specified criteria.

#### 6.4.3.1 SearchClient request message definition

Field	Mandatory Conditional Optional	Data Type	Length	Reference Date	Comments Validation Rules
Search Fields ( <a href="#">Search Request Message Definition</a> )					
GivenName	Optional	String			
FamilyName	Optional	String			
ClientId	Optional	String			Organisation’s Client Id.
CreatedDateFrom	Optional	DateTime			
CreatedDateTo	Optional	DateTime			
Tags	Optional	Array			
Tag	Optional	String			Only Clients that have a matching Tag or Tag(s) will be returned. If multiple Tag elements are supplied, then the Client must have all Tags to be returned. Current available DEX tag : MissingRequiredData



### 6.4.3.2 SearchClient example request message

```
<SearchClientRequest>
  <Criteria>
    <!--type: int-->
    <PageIndex>1</PageIndex>
    <!--type: int-->
    <PageSize>100</PageSize>
    <!--type: Boolean-->
    <IsAscending>>false</IsAscending>
    <!--type: ClientSearchSortColumns - enumeration: [CreatedDate,ClientId,Name,BirthDate,Gender]-->
    <SortColumn>CreatedDate</SortColumn>
    <!--Optional:-->
    <!--type: string-->
    <GivenName>Joe</GivenName>
    <!--Optional:-->
    <!--type: string-->
    <FamilyName>Blog</FamilyName>
    <!--Optional:-->
    <!--type: string-->
    <ClientId>CL0012</ClientId>
    <!--Optional:-->
    <!--type: dateTime-->
    <CreateDateFrom>2014-09-20T16:10:00.000</CreateDateFrom>
    <!--Optional:-->
    <!--type: dateTime-->
    <CreateDateTo>2014-09-25T00:00:00.000</CreateDateTo>
    <!--Optional:-->
    <Tags>
      <!--Zero or more repetitions:-->
      <!--type: string-->
      <Tag>MissingRequiredData</Tag>
    </Tags>
  </Criteria>
</SearchClientRequest>
```

### 6.4.3.3 SearchClient response message definition

Field	Data Type	Length	Reference Date	Comments Validation Rules
<u>TransactionStatus</u>				
Clients	Array (Client)			Collection of clients that meet the search criteria.
Client ( <u>Client Response Message Definition</u> )				
TotalCount	Int			Number of matching records found.

### 6.4.3.4 SearchClient example response message

```

<SearchClientResponse>
  <TransactionStatus>
    <TransactionStatusCode>Success</TransactionStatusCode>
    <Messages/>
  </TransactionStatus>
  <Clients>
    <Client>
      <ClientId>CL0012</ClientId>
      <SLK>LO2OE240220141</SLK>
      <ConsentToProvideDetails>true</ConsentToProvideDetails>
      <ConsentedForFutureContacts>true</ConsentedForFutureContacts>
      <ConsentGivenToDepartment>true</ConsentGivenToDepartment>
      <GivenName>Joe</GivenName>
      <FamilyName>Blog</FamilyName>
      <IsUsingPsuedonym>false</IsUsingPsuedonym>
      <BirthDate>2014-02-24T00:00:00</BirthDate>
      <IsBirthDateAnEstimate>false</IsBirthDateAnEstimate>
      <GenderCode>MALE</GenderCode>
      <GenderDetails/>
      <ResidentialAddress>
        <Suburb>Forde</Suburb>
        <State>ACT</State>
        <Postcode>2914</Postcode>
      </ResidentialAddress>
    </Client>
  </Clients>
</SearchClientResponse>

```

```

    <AddressLine1/>
    <AddressLine2/>
  </ResidentialAddress>
  <CountryOfBirthCode>1101</CountryOfBirthCode>
  <LanguageSpokenAtHomeCode>1201</LanguageSpokenAtHomeCode>
  <AboriginalOrTorresStraitIslanderOriginCode>NO</AboriginalOrTorresStraitIslanderOriginCode>
  <HasDisabilities>true</HasDisabilities>
  <HomelessIndicatorCode>ATRISK</HomelessIndicatorCode>
  <HouseholdCompositionCode>GROUP</HouseholdCompositionCode>
  <MainSourceOfIncomeCode>NIL</MainSourceOfIncomeCode>
  <IncomeFrequencyCode>FORTNIGHTLY</IncomeFrequencyCode>
  <IncomeAmount>1</IncomeAmount>
  <FirstArrivalYear>2014</FirstArrivalYear>
  <MigrationVisaCategoryCode>SKILLED</MigrationVisaCategoryCode>
  <AncestryCode>2102</AncestryCode>
  <AccommodationTypeCode>1</AccommodationTypeCode>
  <DVACardStatusCode>1</DVACardStatusCode>
  <HasCarer>false</HasCarer>
  <EducationLevelCode>PREPRIMARY</EducationLevelCode>
  <EmploymentStatusCode>WORKFULLTIME</EmploymentStatusCode>
  <IsClientACarer>false</IsClientACarer>
  <NDISEligibilityCode>ELIGIBLE</NDISEligibilityCode>
  <Disabilities>
    <DisabilityCode>Physical</DisabilityCode>
  </Disabilities>
  <CreatedDateTime>2014-09-22T16:19:09.317</CreatedDateTime>
</Client>
</Clients>
<TotalCount>1</TotalCount>
</SearchClientResponse>

```

#### 6.4.4 ValidateForDuplicateClient

**ValidateForDuplicateClient** provides a list of clients registered for the user's organisation based on the supplied criteria.

#### 6.4.4.1 ValidateForDuplicateClient request message definition

Field	Mandatory Conditional Optional	Data Type	Length	Reference Date	Comments Validation Rules
Search Fields ( <a href="#">Search Request Message</a> Definition)					
GivenName	Mandatory	String			Clients matching any three from the GivenName, FamilyName, BirthDate and Gender are retrieved.
FamilyName	Mandatory	String			Clients matching any three from the GivenName, FamilyName, BirthDate and Gender are retrieved.
ClientId	Mandatory	String			Organisation's Client Id. Any Client matching the ClientId will be retrieved.
GenderCode	Mandatory	String			Clients matching any three from the GivenName, FamilyName, BirthDate and Gender are retrieved.
BirthDate	Mandatory	Date			Clients matching any three from the GivenName, FamilyName, BirthDate and Gender are retrieved.

#### 6.4.4.2 ValidateForDuplicateClient example request message

```
<ValidateForDuplicateClientRequest>
  <Criteria>
    <!--type: int-->
    <PageIndex>1</PageIndex>
    <!--type: int-->
    <PageSize>10</PageSize>
    <!--type: Boolean-->
    <IsAscending>true</IsAscending>
    <!--type: ClientSearchSortColumns - enumeration: [CreatedDate,ClientId,Name,BirthDate,Gender]-->
    <SortColumn>CreatedDate</SortColumn>
    <!--type: string-->
    <GivenName>Joe</GivenName>
    <!--type: string-->
    <FamilyName>Blog</FamilyName>
  </Criteria>
</ValidateForDuplicateClientRequest>
```

```

<!--type: string-->
<ClientId>CL0012</ClientId>
<!--type: string-->
<GenderCode>Male</GenderCode>
<!--type: dateTime-->
<BirthDate>2014-02-24T00:00:00</BirthDate>
</Criteria>
</ValidateForDuplicateClientRequest>

```

#### 6.4.4.3 ValidateForDuplicateClient response message definition

If the transaction is successful, the following structure will be returned.

Field	Data Type	Length	Reference Date	Comments Validation Rules
<a href="#">TransactionStatus</a>				
Clients	Array (Client)			Collection of clients that meet the search criteria.
Client ( <a href="#">Client Response Message Definition</a> )				
TotalCount	Int			Number of matching records found.

**6.4.4.4 ValidateForDuplicateClient example response message**

```

<ValidateForDuplicateClientResponse>
  <TransactionStatus>
    <TransactionStatusCode>Success</TransactionStatusCode>
    <Messages/>
  </TransactionStatus>
  <Clients>
    <Client>
      <ClientId>CLB00016</ClientId>
      <SLK>LO2OE300619851</SLK>
      <ConsentToProvideDetails>true</ConsentToProvideDetails>
      <ConsentedForFutureContacts>true</ConsentedForFutureContacts>
      <ConsentGivenToDepartment>true</ConsentGivenToDepartment>
      <GivenName>Joe</GivenName>
      <FamilyName>Blog</FamilyName>
      <IsUsingPsuedonym>false</IsUsingPsuedonym>
      <BirthDate>1985-06-30T00:00:00</BirthDate>
      <IsBirthDateAnEstimate>false</IsBirthDateAnEstimate>
      <GenderCode>MALE</GenderCode>
      <GenderDetails/>
      <ResidentialAddress>
        <Suburb>Kambah</Suburb>
        <State>ACT</State>
        <Postcode>2905</Postcode>
        <AddressLine1>Unit 1</AddressLine1>
        <AddressLine2>3 xyz street</AddressLine2>
      </ResidentialAddress>
      <CountryOfBirthCode>1101</CountryOfBirthCode>
      <LanguageSpokenAtHomeCode>1201</LanguageSpokenAtHomeCode>
      <AboriginalOrTorresStraitIslanderOriginCode>NO</AboriginalOrTorresStraitIslanderOriginCode>
      <HasDisabilities>YES</HasDisabilities>
      <HomelessIndicatorCode>true</HomelessIndicatorCode>
      <HouseholdCompositionCode>GROUP</HouseholdCompositionCode>
      <MainSourceOfIncomeCode>NIL</MainSourceOfIncomeCode>
      <IncomeFrequencyCode>FORTNIGHTLY</IncomeFrequencyCode>
      <IncomeAmount>1</IncomeAmount>
      <FirstArrivalYear>2014</FirstArrivalYear>
    </Client>
  </Clients>
</ValidateForDuplicateClientResponse>

```

```

    <MigrationVisaCategoryCode>SKILLED</MigrationVisaCategoryCode>
    <AncestryCode>5208</AncestryCode>
    <AccommodationTypeCode>BOARDING</AccommodationTypeCode>
    <DVACardStatusCode>GOLD</DVACardStatusCode>
    <HasCarer>true</HasCarer>
    <EducationLevelCode>PREPRIMARY</EducationLevelCode>
    <EmploymentStatusCode>WORKFULLTIME</EmploymentStatusCode>
    <IsClientACarer>true</IsClientACarer>
    <NDISEligibilityCode>INPROGRESS</NDISEligibilityCode>
    <Disabilities>
      <DisabilityCode>Physical</DisabilityCode>
    </Disabilities>
    <CreatedDateTime>2014-09-17T16:05:12.273</CreatedDateTime>
  </Client>
  <Client>
    <ClientId>CL0012</ClientId>
    <SLK>LO2OE240220141</SLK>
    <ConsentToProvideDetails>true</ConsentToProvideDetails>
    <ConsentedForFutureContacts>true</ConsentedForFutureContacts>
    <ConsentGivenToDepartment>true</ConsentGivenToDepartment>
    <GivenName>Joe</GivenName>
    <FamilyName>Blog</FamilyName>
    <IsUsingPsuedonym>>false</IsUsingPsuedonym>
    <BirthDate>2014-02-24T00:00:00</BirthDate>
    <IsBirthDateAnEstimate>>false</IsBirthDateAnEstimate>
    <GenderCode>MALE</GenderCode>
    <ResidentialAddress>
      <Suburb>Forde</Suburb>
      <State>ACT</State>
      <Postcode>2914</Postcode>
      <AddressLine1/>
      <AddressLine2/>
    </ResidentialAddress>
    <CountryOfBirthCode>1101</CountryOfBirthCode>
    <LanguageSpokenAtHomeCode>1201</LanguageSpokenAtHomeCode>
    <AboriginalOrTorresStraitIslanderOriginCode>NO</AboriginalOrTorresStraitIslanderOriginCode>
    <HasDisabilities>YES</HasDisabilities>
    <HomelessIndicatorCode>true</HomelessIndicatorCode>
  </Client>

```

```

    <HouseholdCompositionCode>GROUP</HouseholdCompositionCode>
    <MainSourceOfIncomeCode>NIL</MainSourceOfIncomeCode>
    <IncomeFrequencyCode>FORTNIGHTLY</IncomeFrequencyCode>
    <IncomeAmount>1</IncomeAmount>
    <FirstArrivalYear>2014</FirstArrivalYear>
    <MigrationVisaCategoryCode>SKILLED</MigrationVisaCategoryCode>
    <AncestryCode>5208</AncestryCode>
    <AccommodationTypeCode>BOARDING</AccommodationTypeCode>
    <DVACardStatusCode>GOLD</DVACardStatusCode>
    <HasCarer>true</HasCarer>
    <EducationLevelCode>PREPRIMARY</EducationLevelCode>
    <EmploymentStatusCode>WORKFULLTIME</EmploymentStatusCode>
    <IsClientACarer>true</IsClientACarer>
    <NDISEligibilityCode>INPROGRESS</NDISEligibilityCode>
    <Disabilities>
      <DisabilityCode>Physical</DisabilityCode>
    </Disabilities>
    <CreatedDateTime>2014-09-22T16:19:09.317</CreatedDateTime>
  </Client>
</Clients>
<TotalCount>2</TotalCount>
</ValidateForDuplicateClientResponse>

```

### 6.4.5 UpdateClient

The **UpdateClient** operation is to be used when an organisation wishes to update client data already submitted to the Data Exchange in order to update client details. If the validation of the data is unsuccessful, an error will be generated and no record will be updated.



## 6.4.5.1 UpdateClient request message definition

Field	Mandatory Conditional Optional	Data Type	Length	Reference Date	Comments Validation Rules
ClientId	Mandatory	String	50		Organisation's client Id. This is used to identify and update the client record in DEX database. <b>ClientId cannot be updated to a new value.</b>
SLK	Conditional Mandatory	String	14		Must be supplied if ConsentToProvideDetails is false.
ConsentToProvideDetails	Mandatory	Boolean			Client consent for DSS to collect personal information from organisations for storage on the Data Exchange. If false: Then GivenName, FamilyName and Address line (if supplied) are saved as blank.
ConsentedForFutureContacts	Mandatory	Boolean			Client consent to future contact for survey / research / evaluation.
GivenName	Mandatory	String	30		Must be supplied if ConsentToProvideDetails is true.
FamilyName	Mandatory	String	30		Must be supplied if ConsentToProvideDetails is true.
IsUsingPsuedonym	Mandatory	Boolean			true = If name specified is a Psuedonym false = If name specified is not a Psuedonym

Field	Mandatory Conditional Optional	Data Type	Length	Reference Date	Comments Validation Rules
BirthDate	Mandatory	DateTime			IsBirthDateAnEstimate is true then it should be in the format of 'yyyy-01-01'. Should be the real birth date in the format of 'yyyy-mm-dd' if IsBirthDateAnEstimate is false.
IsBirthDateAnEstimate	Mandatory	Boolean			true = the birth date is just an estimate false = the birth date is the real birth date
GenderCode	Mandatory	String			Must be a valid Gender code retrieved using GetReferenceData operation.
GenderDetails	Optional	String	100		Gender Detail of the Client  Optional when 'OTHER' GenderCode is used. If GenderDetails are provided when another GenderCode is provided, then field contents will not be saved and a warning will be generated.
ResidentialAddress					
Suburb	Mandatory	String	50		Suburb from residential address of a client.
State	Mandatory	String	3		State from residential address of a client.
Postcode	Mandatory	String	4		Postcode from residential address of a client.
AddressLine1	Optional	String	180		Street address from residential address of a client.

Field	Mandatory Conditional Optional	Data Type	Length	Reference Date	Comments Validation Rules
AddressLine2	Optional	String	180		Overflow from Address line 1 from residential address of a client.
CountryOfBirthCode	Mandatory	String			Must be a valid Country code retrieved using GetReferenceData operation.
LanguageSpokenAtHomeCode	Mandatory	String			Must be a valid Language code retrieved using GetReferenceData operation.
AboriginalOrTorresStraitIslanderOriginCode	Mandatory	String			Must be a valid AboriginalOrTorresStraitIslanderOrigin code retrieved using GetReferenceData operation.
HasDisabilities	Mandatory	Boolean			If true, then minimum of one Disability code is required. If false, then no Disability code should be sent.
HomelessIndicatorCode	Optional	String			Must be a valid HomelessIndicatorCode retrieved using GetReferenceData operation.
HouseholdCompositionCode	Optional	String			Must be a valid HouseholdComposition code. Can be retrieved using GetReferenceData operation.
MainSourceOfIncomeCode	Optional	String			Must be a valid MainSourceOfIncomeCode retrieved using GetReferenceData operation.
IncomeFrequencyCode	Optional	String			Must be a valid IncomeFrequency code retrieved using GetReferenceData operation.

Field	Mandatory Conditional Optional	Data Type	Length	Reference Date	Comments Validation Rules
IncomeAmount	Optional	Int			Client income.
FirstArrivalMonth	Optional	String			Month Client first arrived in Australia Full name of the month: January, February, March, April, May, June, July, August, September, October, November, December
FirstArrivalYear	Optional	Int			Year Client first arrived in Australia.
MigrationVisaCategoryCode	Optional	String			Must be a valid MigrationVisaCategoryCode retrieved using GetReferenceData operation.
AncestryCode	Optional	String			Must be a valid AncestryCode retrieved using GetReferenceData operation.
AccommodationTypeCode	Optional	String			Must be a valid AccommodationTypeCode retrieved using GetReferenceData operation.
DVACardStatusCode	Optional	String			Must be a valid DVACardStatus retrieved using GetReferenceData operation.
HasCarer	Optional	Boolean			true = If client has a carer false = If client does not have a carer
EducationLevelCode	Optional	String			Must be a valid EducationLevelCode retrieved using GetReferenceData operation.
EmploymentStatusCode	Optional	String			Must be a valid EmploymentStatusCode retrieved using GetReferenceData operation.

Field	Mandatory Conditional Optional	Data Type	Length	Reference Date	Comments Validation Rules
IsClientACarer	Optional	Boolean			true = If client is a carer false = If client is not a carer
NDISEligibilityCode	Optional	String			Must be a valid NDISEligibilityCode retrieved using GetReferenceData operation.
Disabilities	Optional				
DisabilityCode	Mandatory	String			Must be a valid DisabilityCode value retrieved using GetReferenceData operation.

#### 6.4.5.2 UpdateClient example request message

```

<UpdateClientRequest>
  <Client>
    <!--type: string-->
    <ClientId>CL1022</ClientId>
    <!--type: string-->
    <SLK> ITZOA150120033</SLK>
    <!--type: Boolean-->
    <ConsentToProvideDetails>true</ConsentToProvideDetails>
    <!--type: Boolean-->
    <ConsentedForFutureContacts>true</ConsentedForFutureContacts>
    <!--type: string-->
    <GivenName>Joan</GivenName>
    <!--type: string-->
    <FamilyName>Citizen</FamilyName>
    <!--type: Boolean-->
    <IsUsingPsuedonym>true</IsUsingPsuedonym>
    <!--type: dateTime-->
    <BirthDate>2003-01-15T00:00:00</BirthDate>
    <!--type: Boolean-->
    <IsBirthDateAnEstimate>false</IsBirthDateAnEstimate>
  </Client>
</UpdateClientRequest>

```

```

<!--type: string-->
<GenderCode>OTHER</GenderCode>
<GenderDetails>Genderfluid</GenderDetails>
<ResidentialAddress>
  <!--Optional:-->
  <!--type: string-->
  <Suburb>Plains</Suburb>
  <!--type: string-->
  <State>NSW</State>
  <!--type: string-->
  <Postcode>2600</Postcode>
  <!--type: string-->
  <AddressLine1>12 Abc St</AddressLine1>
  <!--Optional:-->
  <!--type: string-->
  <AddressLine2>Rose wood park</AddressLine2>
</ResidentialAddress>
<!--type: string-->
<CountryOfBirthCode>1101</CountryOfBirthCode>
<!--type: string-->
<LanguageSpokenAtHomeCode>1201</LanguageSpokenAtHomeCode>
<!--type: string-->
<AboriginalOrTorresStraitIslanderOriginCode>NOTSTATED</AboriginalOrTorresStraitIslanderOriginCode>
<!--type: Boolean-->
<HasDisabilities>>true</HasDisabilities>
<!--Optional:-->
<!--type: string-->
<HomelessIndicatorCode>ATRISK</HomelessIndicatorCode>
<!--Optional:-->
<!--type: string-->
<HouseholdCompositionCode>SINGLE</HouseholdCompositionCode>
<!--Optional:-->
<!--type: string-->
<MainSourceOfIncomeCode>EMPLOYED</MainSourceOfIncomeCode>
<!--Optional:-->
<!--type: string-->
<IncomeFrequencyCode>WEEKLY</IncomeFrequencyCode>
<!--Optional:-->

```

```

<!--type: int-->
<IncomeAmount>300</IncomeAmount>
<!--Optional:-->
<!--type: Month - enumeration:
[January, February, March, April, May, June, July, August, September, October, November, December] -->
<FirstArrivalMonth>January</FirstArrivalMonth>
<!--Optional:-->
<!--type: int-->
<FirstArrivalYear>1999</FirstArrivalYear>
<!--Optional:-->
<!--type: string-->
<MigrationVisaCategoryCode>HUMANITARIAN</MigrationVisaCategoryCode>
<!--Optional:-->
<!--type: string-->
<AncestryCode>1103</AncestryCode>
<!--Optional:-->
<!--type: string-->
<AccommodationTypeCode>BOARDING</AccommodationTypeCode>
<!--Optional:-->
<!--type: string-->
<DVACardStatusCode>GOLD</DVACardStatusCode>
<!--Optional:-->
<!--type: Boolean-->
<HasCarer>true</HasCarer>
<!--Optional:-->
<!--type: string-->
<EducationLevelCode>PREPRIMARY</EducationLevelCode>
<!--Optional:-->
<!--type: string-->
<EmploymentStatusCode>WORKFULLTIME</EmploymentStatusCode>
<!--Optional:-->
<!--type: Boolean-->
<IsClientACarer>true</IsClientACarer>
<!--Optional:-->
<!--type: string-->
<NDISEligibilityCode>INPROGRESS</NDISEligibilityCode>
<Disabilities>
  <!--Zero or more repetitions:-->

```

```

    <!--type: string-->
    <DisabilityCode>NOTSTATED</DisabilityCode>
  </Disabilities>
</Client>
</UpdateClientRequest>

```

### 6.4.5.3 UpdateClient response message definition

Field	Mandatory Conditional Optional	Data Type	Length	Reference Date	Comments Validation Rules
<a href="#">TransactionStatus</a>					

### 6.4.5.4 UpdateClient response message

```

<UpdateClientResponse>
  <TransactionStatus>
    <TransactionStatusCode>Success</TransactionStatusCode>
    <Messages/>
  </TransactionStatus>
</UpdateClientResponse>

```

## 6.4.6 DeleteClient

The **DeleteClient** operation can be used to delete a client registered with the Data Exchange. If the client is attached to any cases then it will not be deleted.

### 6.4.6.1 DeleteClient request message definition

Field	Mandatory Conditional Optional	Data Type	Length	Reference Date	Comments Validation Rules
ClientId	Mandatory	String			Organisation's Client Id. The Client is not deleted if attached to any Cases.

### 6.4.6.2 DeleteClient example request message

```

<DeleteClientRequest>

```



```

<!--type: string-->
<ClientId>123456</ClientId>
</DeleteClientRequest>

```

#### 6.4.6.3 DeleteClient response message definition

If the transaction is successful, the following structure will be returned.

Field	Mandatory Conditional Optional	Data Type	Length	Reference Date	Comments Validation Rules
<a href="#">TransactionStatus</a>					

#### 6.4.6.4 DeleteClient example response message

```

<DeleteClientResponse>
  <TransactionStatus>
    <TransactionStatusCode>Success</TransactionStatusCode>
    <Messages/>
  </TransactionStatus>
</DeleteClientResponse>

```

## 6.5 DataCollection.Case

### 6.5.1 AddCase

The **AddCase** operation is to be used when an organisation wishes to submit data to the Data Exchange in order to create a case. This operation also allows attaching registered clients to the case being created.

#### 6.5.1.1 AddCase request message definition

Field	Mandatory Conditional Optional	Data Type	Length	Reference Date	Comments Validation Rules
Case					
Caseld	Mandatory	String	30		Organisation's Case Id. A Caseld is <b>not</b> case sensitive. A client's name, part of a client's name, or other identifiable information should not be used as a Caseld under any circumstances.
OutletActivityId	Mandatory	Int			DEX's OutletActivityId. Must be for an active OutletActivity. Can be retrieved using GetOutletActivities operation.
TotalNumberOfUnidentifiedClients	Conditional Mandatory	Int			Number of unidentified clients. Allowed range 0-999.
ClientAttendanceProfileCode	Optional	String			Must be a valid ClientAttendanceProfileCode retrieved using GetReferenceData operation.
EndDate	Optional	Date			End date for specified case.
AgBusinessTypeCode	Optional	String			Must be a valid AgBusinessType code retrieved using GetReferenceData operation. Optional according to Activity selected in case.
ParentingAgreementOutcome	Optional	ParentingAgreementOutcome			

Field	Mandatory Conditional Optional	Data Type	Length	Reference Date	Comments Validation Rules
ParentingAgreementOutcomeCode	Conditional Mandatory	String			Must be a valid ParentingAgreement code retrieved using GetReferenceData operation.
DateOfParentingAgreement	Conditional Mandatory	DateTime			ParentingAgreementOutcome Date.
DidLegalPractitionerAssistWithFormalisingAgreement	Conditional Mandatory	Boolean			Did a Legal Practitioner assist when Parenting Agreement was formalised (or similar).
Section60I	Optional	Section60I			
Section60ICertificateTypeCode	Conditional Mandatory	String			Must be a valid Section60IType code retrieved using GetReferenceData operation.
DateIssued	Conditional Mandatory	DateTime			Date Section60I Certificate is issued.
PropertyAgreementOutcome	Optional	PropertyAgreementOutcome			
PropertyAgreementOutcomeCode	Conditional Mandatory	String			Must be a valid PropertyAgreement code retrieved using GetReferenceData operation.
DateOfPropertyAgreement	Conditional Mandatory	DateTime			PropertyAgreementOutcome Date.
DidLegalPractitionerAssistInPropertyMediation	Conditional Mandatory	Boolean			Did a legal practitioner assist in mediating property agreement (or similar).
Clients	Optional	Array (CaseClient)			Zero or More organisation client Ids to be associated with the case. The client should already be registered for the user's organisation.
CaseClient	Conditional Mandatory				

Field	Mandatory Conditional Optional	Data Type	Length	Reference Date	Comments Validation Rules
ClientId	Conditional Mandatory	String			Organisation's client Id. Mandatory If client is provided.  It has to be unique for all the clients registered with the organisation.
ReasonsForAssistance	Optional	Array (ReasonForAssistance)			
ReasonForAssistance	Optional	ReasonForAssistance			If one or more reasons are sent, One must indicate one reason as the primary reason for seeking assistance. The user can send multiple secondary reasons for seeking assistance.
AssistanceNeededCode	Conditional Mandatory	String			Must be a valid AssistanceNeededCode retrieved using GetReferenceData operation.
IsPrimary	Conditional Mandatory	Boolean			Specify if this reason is primary or not.
ReferralSourceCode	Optional	String			Must be a valid ReferralSourceCode retrieved using GetReferenceData operation.
ExitReasonCode	Optional	String			Must be a valid ExitReasonCode retrieved using GetReferenceData operation.

### 6.5.1.2 AddCase example Rrequest message

```
<AddCaseRequest>
  <Case>
    <!--type: string-->
    <CaseId>Ca11082014</CaseId>
```

```

<!--type: int-->
<OutletActivityId>398</OutletActivityId>
<!--Optional:-->
<!--type: int-->
<TotalNumberOfUnidentifiedClients>3</TotalNumberOfUnidentifiedClients>
<!--Optional:-->
<!--type: string-->
<ClientAttendanceProfileCode>PSGROUP</ClientAttendanceProfileCode>
<!--Optional:-->
<!--type: dateTime-->
<EndDate>2006-08-20T00:00:00</EndDate>
<!--Optional:-->
<!--type: string-->
<AgBusinessTypeCode>0111</AgBusinessTypeCode>
<!--Optional:-->
<ParentingAgreementOutcome>
  <!--type: string-->
  <ParentingAgreementOutcomeCode>FULL</ParentingAgreementOutcomeCode>
  <!--type: dateTime-->
  <DateOfParentingAgreement>2003-12-21T00:00:00</DateOfParentingAgreement>
  <!--type: Boolean-->
  <DidLegalPractitionerAssistWithFormalisingAgreement>true</DidLegalPractitionerAssistWithFormalisingAgreement>
</ParentingAgreementOutcome>
<!--Optional:-->
<Section60I>
  <!--type: string-->
  <Section60ICertificateTypeCode>GENUINE</Section60ICertificateTypeCode>
  <!--type: dateTime-->
  <DateIssued>2003-12-21T00:00:00</DateIssued>
</Section60I>
<!--Optional:-->
<PropertyAgreementOutcome>
  <!--type: string-->
  <PropertyAgreementOutcomeCode>FULL</PropertyAgreementOutcomeCode>
  <!--type: dateTime-->
  <DateOfPropertyAgreement>2003-12-21T00:00:00</DateOfPropertyAgreement>
  <!--type: Boolean-->
  <DidLegalPractitionerAssistInPropertyMediation>true</DidLegalPractitionerAssistInPropertyMediation>

```

```

    </PropertyAgreementOutcome>
  </Case>
  <Clients>
    <!--Zero or more repetitions:-->
    <CaseClient>
      <!--type: string-->
      <ClientId>CL0012</ClientId>
      <ReasonsForAssistance>
        <!--Zero or more repetitions:-->
        <ReasonForAssistance>
          <!--type: string-->
          <AssistanceNeededCode>PHYSICAL</AssistanceNeededCode>
          <!--type: Boolean-->
          <IsPrimary>>true</IsPrimary>
        </ReasonForAssistance>
      </ReasonsForAssistance>
      <!--type: string-->
      <ReferralSourceCode>COMMUNITY</ReferralSourceCode>
      <!--Optional:-->
      <!--type: string-->
      <ExitReasonCode>MOVED</ExitReasonCode>
    </CaseClient>
  </Clients>
</AddCaseRequest>

```

**6.5.1.3 AddCase response message definition**

If the transaction is successful, the following structure will be returned.

Field	Data Type	Length	Reference Date	Comments Validation Rules
<u>TransactionStatus</u>				

#### 6.5.1.4 AddCase example response message

```
<AddCaseResponse>
  <TransactionStatus>
    <TransactionStatusCode>Success</TransactionStatusCode>
  </TransactionStatus>
</AddCaseResponse>
```

### 6.5.2 GetCase

The **GetCase** operation is to be used when an organisation wishes to retrieve case data from the Data Exchange. The operation also retrieves the attached clients and sessions.

#### 6.5.2.1 GetCase request message definition

Field	Mandatory Conditional Optional	Data Type	Length	Reference Date	Comments Validation Rules
Caseld	Mandatory	String			Organisation's case Id.

#### 6.5.2.2 GetCase Example Request Message

```
<GetCaseRequest>
  <!--type:string-->
  <CaseId>CA0050</CaseId>
</GetCaseRequest>
```

#### 6.5.2.3 GetCase response message definition

If the transaction is successful, the following structure will be returned.

Field	Data Type	Reference Date	Comments Validation Rules
<a href="#">TransactionStatus</a>			
OutletName	String		Organisation's outlet name.
CaseDetail			

Field	Data Type	Reference Date	Comments Validation Rules
Caseld	String		Organisation's case Id.
OutletActivityId	Int		DEX's OutletActivityId.
TotalNumberOfUnidentifiedClients	Int		Number of unidentified clients. Allowed range 0-999.
ClientAttendanceProfileCode	String		The ClientAttendanceProfileCode value.
EndDate	Date		The case end date.
AgBusinessTypeCode	String		The AgBusinessTypeCode value.
ProgramActivityName	String		DEX's activity name.
CreatedDateTime	DateTime		DateTime case was created in DEX's database.
Clients	Array (CaseClient)		List of associated clients.
CaseClient	CaseClient		Associated client.
ClientId	String		Organisation's client Id.
ReasonsForAssistance	Array(ReasonForAssistance)		List of reasons for assistance for a client.
ReasonForAssistance	ReasonForAssistance		Reason for assistance for a client.
AssistanceNeededCode	String		The AssistanceNeededCode value.
IsPrimary	Boolean		Specify if this reason is primary or not.
ReferralSourceCode	String		The ReferralSourceCode value.
ExitReasonCode	String		The ExitReasonCode value.
Sessions	Array		
SessionId	String		List of sessions that are attached to the case.
ParentingAgreementOutcome	ParentingAgreementOutcome		



Field	Data Type	Reference Date	Comments Validation Rules
ParentingAgreementOutcomeCode	String		The ParentingAgreement code value.
DateOfParentingAgreement	DateTime		ParentingAgreementOutcome Date.
DidLegalPractitionerAssistWithFormalising Agreement	Boolean		Did a Legal Practitioner assist when parenting agreement was formalised (or similar).
Section 60I			
Section60ICertificateTypeCode	String		The Section60IType code value.
Date Issued	DateTime		Date Section60I Certificate is issued.
PropertyAgreementOutcome	PropertyAgreementOutcome		
PropertyAgreementOutcomeCode	String		The PropertyAgreement code value.
DateOfPropertyAgreement	DateTime		PropertyAgreementOutcome Date.
DidLegalPractitionerAssistInPropertyMediation	Boolean		Did a legal practitioner assist in mediating property agreement (or similar).

#### 6.5.2.4 GetCase example response message

```

<GetCaseResponse>
  <TransactionStatus>
    <TransactionStatusCode>Success</TransactionStatusCode>
    <Messages/>
  </TransactionStatus>
  <Case>
    <OutletName>AAAAustralianSupportServices</OutletName>
    <CaseDetail>
      <CaseId>CA0050</CaseId>
      <OutletActivityId>946</OutletActivityId>
      <TotalNumberOfUnidentifiedClients>28</TotalNumberOfUnidentifiedClients>
      <ClientAttendanceProfileCode>PSGROUP</ClientAttendanceProfileCode>
      <EndDate>2006-08-20T00:00:00</EndDate>
      <AgBusinessTypeCode>0111</AgBusinessTypeCode>
    </CaseDetail>
  </Case>
</GetCaseResponse>

```

```

</CaseDetail>
<ProgramActivityName>Children's Contact Services</ProgramActivityName>
<CreatedDateTime>2014-05-14T14:52:05.92</CreatedDateTime>
<Clients>
  <CaseClient>
    <ClientId>DT7</ClientId>
    <ReasonsForAssistance>
      <ReasonForAssistance>
        <AssistanceNeededCode>MATERIAL</AssistanceNeededCode>
        <IsPrimary>true</IsPrimary>
      </ReasonForAssistance>
    </ReasonsForAssistance>
    <ReferralSourceCode>HEALTHAGENCY</ReferralSourceCode>
    <ExitReasonCode>MOVED</ExitReasonCode>
  </CaseClient>
  <CaseClient>
    <ClientId>079</ClientId>
    <ReasonsForAssistance/>
    <ReferralSourceCode/>
    <ExitReasonCode/>
  </CaseClient>
  <CaseClient>
    <ClientId>078</ClientId>
    <ReasonsForAssistance/>
    <ReferralSourceCode/>
    <ExitReasonCode/>
  </CaseClient>
</Clients>
<Sessions>
  <SessionId>0001</SessionId>
</Sessions>
<ParentingAgreementOutcome>
  <ParentingAgreementOutcomeCode>FULL</ParentingAgreementOutcomeCode>
  <DateOfParentingAgreement>2013-071-01T00:00:00</DateOfParentingAgreement>
<DidLegalPractitionerAssistWithFormalisingAgreement>>false</DidLegalPractitionerAssistWithFormalisingAgreement>
</ParentingAgreementOutcome>
<Section60I>
  <Section60ICertificateTypeCode>GENUINE</Section60ICertificateTypeCode>

```

```

    <DateIssued>2014-06-01T00:00:00</DateIssued>
  </Section60I>
  <PropertyAgreementOutcome>
    <PropertyAgreementOutcomeCode>FULL</PropertyAgreementOutcomeCode>
    <DateOfPropertyAgreement>2013-071-01T00:00:00</DateOfPropertyAgreement>
    <DidLegalPractitionerAssistInPropertyMediation>>false</DidLegalPractitionerAssistInPropertyMediation>
  </PropertyAgreementOutcome>
</Case>
</GetCaseResponse>

```

### 6.5.3 SearchCase

**SearchCase** operation can be used to search for user's organisation cases based on the specified criteria.

#### 6.5.3.1 SearchCase request message definition

Field	Mandatory Conditional Optional	Data Type	Length	Reference Date	Comments Validation Rules
Search Fields ( Search Request Message Definition)					
Caseld	Optional	String	30		Organisation's case Id. Any case matching the Caseld will be retrieved.
OutletId	Optional	Int			DEX's OutletId.
OutletActivityId	Optional	Int			DEX's OutletActivityId.
CreatedDateFrom	Optional	Date			If only CreatedDateFrom is specified then CreatedDateTo defaults to Today.
CreatedDateTo	Optional	Date			If only CreatedDateTo is specified then CreatedDateFrom defaults to start of DEX.
CreatedByMe	Optional	Boolean			If <b>true</b> , only cases created by current user will be retrieved.
ClientExternalId	Optional	String			Organisation's client Id. Any case matching the ClientId will be retrieved.

Field	Mandatory Conditional Optional	Data Type	Length	Reference Date	Comments Validation Rules
EndDateFrom	Optional	Date			Look for cases where end date is specified. Within the date range provided. If only EndDateFrom is specified then EndDateTo defaults to Today. Specifying these criteria will exclude all active (without end date) cases.
EndDateTo	Optional	Date			Look for cases where end date is specified. Within the date range provided. If only EndDateTo is specified then EndDateFrom defaults to start of DEX. Specifying these criteria will exclude all active (without end date) cases.

### 6.5.3.2 SearchCase example request message

```

<SearchCaseRequest>
  <Criteria>
    <!--type:int-->
    <PageIndex>1</PageIndex>
    <!--type:int-->
    <PageSize>3</PageSize>
    <!--type:Boolean-->
    <IsAscending>>false</IsAscending>
    <!--type:CaseSearchSortColumns-enumeration:[CreatedDate,CaseId,OutletActivity,Outlet,SessionCount]-->
    <SortColumn>Outlet</SortColumn>
    <!--Optional:-->
    <!--type:string-->
    <CaseId>0008</CaseId>
    <!--Optional:-->
    <!--type:int-->
    <OutletId>17</OutletId>
    <!--Optional:-->

```

```
<!--type:int-->
<OutletActivityId>685</OutletActivityId>
<!--Optional:-->
<!--type:dateTime-->
<CreateDateFrom>2014-05-01T00:00:00</CreateDateFrom>
<!--Optional:-->
<!--type:dateTime-->
<CreateDateTo>2014-05-10T00:00:00</CreateDateTo>
<!--Optional:-->
<!--type:Boolean-->
<CreatedByMe>true</CreatedByMe>
<!--Optional:-->
<!--type:string-->
<ClientExternalId>clientID123</ClientExternalId>
<!--Optional:-->
<!--type:dateTime-->
<dex:EndDateFrom>2015-09-10T00:00:00</dex:EndDateFrom>
<!--Optional:-->
<!--type:dateTime-->
<dex:EndDateTo>2015-09-15T00:00:00</dex:EndDateTo>
</Criteria>
</SearchCaseRequest>
```

### 6.5.3.3 SearchCase response message definition

If the transaction is successful, the following structure will be returned.

Field	Data Type	Reference Date	Comments Validation Rules
<a href="#">TransactionStatus</a>			
Cases	Array (CaseSearchRecord)		
Case			
OutletName	String		Organisation's outlet name.
CaseDetail			
Caseld	String		Organisation's case Id.
OutletActivityId	Int		DEX's OutletActivityId.
TotalNumberOfUnidentifiedClients	Int		Number of unidentified clients. Allowed range 0-999.
ClientAttendanceProfileCode	String		
EndDate	Date		
ProgramActivityName	String		Activity name.
CreatedDateTime	DateTime		DateTime Case was created in DEX's database.
SessionCount	Int		Number of sessions associated with the case.

#### 6.5.3.4 SearchCase example response message

```
<SearchCaseResponse>
  <TransactionStatus>
    <TransactionStatusCode>Success</TransactionStatusCode>
    <Messages/>
  </TransactionStatus>
  <Cases>
    <Case>
      <OutletName>The Roman Catholic Bishop of Geraldton Centacare Family Services</OutletName>
      <CaseDetail>
        <CaseId>0008</CaseId>
        <OutletActivityId>685</OutletActivityId>
        <TotalNumberOfUnidentifiedClients>2</TotalNumberOfUnidentifiedClients>
        <ClientAttendanceProfileCode>PSGROUP</ClientAttendanceProfileCode>
        <EndDate>2018-04-28T00:00:00</EndDate>
      </CaseDetail>
      <ProgramActivityName>Family Dispute Resolution</ProgramActivityName>
      <CreatedDateTime>2014-05-08T10:23:55.3</CreatedDateTime>
      <SessionCount>8</SessionCount>
    </Case>
  </Cases>
  <TotalCount>1</TotalCount>
</SearchCaseResponse>
```

## 6.5.4 UpdateCase

The **UpdateCase** operation is to be used when an organisation wishes to updated previously submitted case data to the Data Exchange. This includes adding additional clients, removing clients, etc.

### 6.5.4.1 UpdateCase example request definition

Field	Mandatory Conditional Optional	Data Type	Length	Reference Date	Comments Validation Rules
Case					
Caseld	Mandatory	String	50		Organisation's case Id. It is used to retrieve and update the Case record in DEX database. <b>Caseld cannot be updated to new value.</b>
OutletActivityId	Mandatory	Int			DEX's OutletActivityId. Must be for an active OutletActivity. Can be retrieved using GetOutletActivities operation. Cannot be updated for cases, which have sessions attached.
TotalNumberOfUnidentifiedClients	Mandatory	Int			Number of unidentified clients. Allowed range 0-999.
ClientAttendanceProfileCode	Optional	String			Must be a valid ClientAttendanceProfileCode retrieved using GetReferenceData operation.
EndDate	Optional	Date			Case end date.
AgBusinessTypeCode	Optional	String			Must be a valid AgBusinessType code retrieved using GetReferenceData operation. Optional according to activity selected in case.
ParentingAgreementOutcome	Optional	ParentingA greementO utcome			
ParentingAgreementOutcomeCode	Conditional Mandatory	String			Must be a valid ParentingAgreement code retrieved using GetReferenceData operation.



Field	Mandatory Conditional Optional	Data Type	Length	Reference Date	Comments Validation Rules
DateOfParentingAgreement	Conditional Mandatory	DateTime			ParentingAgreementOutcome Date.
DidLegalPractitionerAssistWithFormalisingAgreement	Conditional Mandatory	Boolean			Did a legal practitioner assist when parenting agreement was formalised (or similar).
Section60I	Optional	Section60I			
Section60ICertificateTypeCode	Conditional Mandatory	String			Must be a valid Section60ICertificateType code retrieved using GetReferenceData operation.
DateIssued	Conditional Mandatory	DateTime			Date Section60I Certificate is issued.
PropertyAgreementOutcome	Optional	PropertyAgreementOutcome			
PropertyAgreementOutcomeCode	Conditional Mandatory	String			Must be a valid PropertyAgreement code retrieved using GetReferenceData operation.
DateOfPropertyAgreement	Conditional Mandatory	DateTime			PropertyAgreementOutcome date.
DidLegalPractitionerAssistInPropertyMediation	Conditional Mandatory	Boolean			Did a Legal Practitioner assist in mediating property agreement (or similar).
Clients	Optional	Array (String)			Zero or More organisation CaseClient to be associated with the Case. The client should already be registered for the user's organisation. The <b>existing</b> attached CaseClients, which are not passed in the request, will be <b>removed</b> .

Field	Mandatory Conditional Optional	Data Type	Length	Reference Date	Comments Validation Rules
CaseClient	Conditional Mandatory	String			
ClientId	Conditional Mandatory	String			Organisation's client Id. Mandatory if client is provided It has to be unique for all the clients registered with the organisation.
ReasonsForAssistance	Optional	Array(ReasonForAssistance)			
ReasonForAssistance	Optional	ReasonForAssistance			If one or more reasons are sent, One must indicate one reason as the primary reason for seeking assistance. The user can send multiple secondary reasons for seeking assistance.
AssistanceNeededCode	Conditional Mandatory	String			Must be a valid AssistanceNeededCode retrieved using GetReferenceData operation.
IsPrimary	Conditional Mandatory	Boolean			Specify if this reason is primary or not.
ReferralSourceCode	Optional	String			Must be a valid ReferralSourceCode retrieved using GetReferenceData operation.
ExitReasonCode	Optional	String			Must be a valid ExitReasonCode retrieved using GetReferenceData operation.

**6.5.4.2 UpdateCase example request message**

```

<UpdateCaseRequest>
  <Case>
    <!--type:string-->
    <CaseId>UTCa11082014</CaseId>
    <!--type:int-->
    <OutletActivityId>634</OutletActivityId>
    <!--type:int-->
    <TotalNumberOfUnidentifiedClients>3</TotalNumberOfUnidentifiedClients>
    <!--type:string-->
    <ClientAttendanceProfileCode>PSGROUP</ClientAttendanceProfileCode>
    <!--type: dateTime-->
    <EndDate>2018-04-28T00:00:00</EndDate>
    <!--type:string-->
    <AgBusinessTypeCode>0111</AgBusinessTypeCode>
    <!--Optional:-->
    <ParentingAgreementOutcome>
      <!--type: string-->
      <ParentingAgreementOutcomeCode>FULL</ParentingAgreementOutcomeCode>
      <!--type: dateTime-->
      <DateOfParentingAgreement>2003-12-21T00:00:00</DateOfParentingAgreement>
      <!--type: Boolean-->
    </ParentingAgreementOutcome>
    <DidLegalPractitionerAssistWithFormalisingAgreement>true</DidLegalPractitionerAssistWithFormalisingAgreement>
    <!--Optional:-->
    <Section60I>
      <!--type: string-->
      <Section60ICertificateTypeCode>GENUINE</Section60ICertificateTypeCode>
      <!--type: dateTime-->
      <DateIssued>2003-12-21T00:00:00</DateIssued>
    </Section60I>
    <!--Optional:-->
    <PropertyAgreementOutcome>
      <!--type: string-->
      <PropertyAgreementOutcomeCode>FULL</PropertyAgreementOutcomeCode>
      <!--type: dateTime-->
      <DateOfPropertyAgreement>2003-12-21T00:00:00</DateOfPropertyAgreement>
    </PropertyAgreementOutcome>
  </Case>
</UpdateCaseRequest>

```

```

        <!--type: Boolean-->
        <DidLegalPractitionerAssistInPropertyMediation>true</ DidLegalPractitionerAssistInPropertyMediation>
    </PropertyAgreementOutcome>
    <Clients>
        <!--Zeroormorer repetitions:-->
        <CaseClient>
            <!--type:string-->
            <ClientId>132</ClientId>
            <ReasonsForAssistance>
                <!--Zeroormorer repetitions:-->
                <ReasonForAssistance>
                    <!--type:string-->
                    <AssistanceNeededCode>MENTAL</AssistanceNeededCode>
                    <!--type:Boolean-->
                    <IsPrimary>true</IsPrimary>
                </ReasonForAssistance>
            </ReasonsForAssistance>
            <!--type:string-->
            <ReferralSourceCode>Legal</ReferralSourceCode>
            <!--Optional:-->
            <!--type: string-->
            <ExitReasonCode>MOVED</ExitReasonCode>
        </CaseClient>
    </Clients>
</UpdateCaseRequest>

```

### 6.5.4.3 UpdateCase response message definition

If the transaction is successful, the following structure will be returned

Field	Data Type	Reference Date	Comments Validation Rules
<u>TransactionStatus</u>			

#### 6.5.4.4 UpdateCase example response message

```
<UpdateCaseResponse>
  <TransactionStatus>
    <TransactionStatusCode>Success</TransactionStatusCode>
    <Messages/>
  </TransactionStatus>
</UpdateCaseResponse>
```

#### 6.5.5 DeleteCase

The **DeleteCase** operation can be used to delete a case created with the Data Exchange. If the case has any sessions attached, then it will **not** be deleted.

##### 6.5.5.1 DeleteCase request message definition

Field	Mandatory Conditional Optional	Data Type	Length	Reference Date	Comments Validation Rules
Caseld	Mandatory	String			Organisation's Case Id.

##### 6.5.5.2 DeleteCase example request message

```
<DeleteCaseRequest>
  <!--type:string-->
  <CaseId>A0050</CaseId>
</DeleteCaseRequest>
```

##### 6.5.5.3 DeleteCase response message definition

If the transaction is successful, the following structure will be returned.

Field	Data Type	Reference Date	Comments Validation Rules
<u>TransactionStatus</u>			

#### 6.5.5.4 DeleteCase example response message

```
<DeleteCaseResponse>  
  <TransactionStatus>  
    <TransactionStatusCode>Success</TransactionStatusCode>  
    <Messages/>  
  </TransactionStatus>  
</DeleteCaseResponse>
```

## 6.6 DataCollection.Session

### 6.6.1 AddSession

**AddSession** operation can be used by the organisation to add new sessions in a case.

#### 6.6.1.1 AddSession request message definition

Field	Mandatory Conditional Optional	Data Type	Length	Reference Date	Comments Validation Rules
Caseld	Mandatory				Organisation's case Id. Must be an existing Case that is not locked.
Session	Mandatory				
SessionId	Mandatory	String			Organisation's session Id. Must be unique for all the Sessions in a Case. It is <b>not</b> case sensitive. A client's name, part of a client's name, or other identifiable information should not be used as a SessionId under any circumstances.
SessionDate	Mandatory	DateTime			Date of the session. Must be today or in past and within OutletActivity date range.
ServiceTypeId	Mandatory	Int			DEX's ServiceTypeId. Can be retrieved using GetOrganisationActivities.
TotalNumberOfUnidentifiedClients	Conditional Mandatory	Int			Cannot exceed Case. TotalNumberOfUnidentifiedClients.
FeesCharged	Optional	Decimal			Fees Charged to Client for selective activities.
MoneyBusinessCommunityEducation WorkshopCode	Optional	String			Must be a valid. MoneyBusinessCommunityEducationWorkshopCode retrieved using GetReferenceData operation. Optional according to Activity and Service type.

Field	Mandatory Conditional Optional	Data Type	Length	Reference Date	Comments Validation Rules
InterpreterPresent	Optional	Boolean			Specifying where interpreter was present for session.
Extraltems	Optional	Array (Extraltem)			Optional according to activity and service type.
ExtraltemCode	Optional	String			Must be a valid ExtraltemCode retrieved using GetReferenceData operation.
Quantity	Optional	Int			Optional according to Activity and Service type.
Time	Optional	Int			Optional according to Activity and Service type.
TotalCost	Optional	Int			Optional according to Activity and Service type.
TopicCode	Optional	String			Must be a valid TopicCode retrieved using GetReferenceData operation. Optional according to activity and service type.
ServiceSettingCode	Optional	String			Must be a valid ServiceSettingCode retrieved using GetReferenceData operation.
HardshipTypeCode	Optional	String			Must be a valid HardshipTypeCode retrieved using GetReferenceData operation. Optional according to activity and service type.
ExternalReferralDestinationCode	Optional	String			Must be a valid ExternalReferralDestinationCode retrieved using GetReferenceData operation. Optional according to activity and service type.
Clients	Optional	Array (SessionClient)			Zero or more clients which are associated with the Case.
SessionClient	Optional				



Field	Mandatory Conditional Optional	Data Type	Length	Reference Date	Comments Validation Rules
ClientId	Conditional Mandatory	String			Organisation's client Id. Mandatory If client is provided. It has to be unique for all the clients registered with the organisation.
ParticipationCode	Conditional Mandatory	String			Mandatory If Client is provided. Must be a valid ParticipationCode retrieved using GetReferenceData operation.
ClientReferralOutWithPurpose	Optional	Array (Referral)			List of client referrals.
Referral	Optional				Client referral at the session.
TypeCode	Conditional Mandatory	String			Mandatory If referral is provided. Must be a valid TypeCode retrieved using GetReferenceData operation.
PurposeCodes	Conditional Mandatory	Array (string)			List Of DEX's referral purpose codes. Mandatory If referral is provided.
Purpose Code	Conditional Mandatory	String			Mandatory If referral is provided. Must be a valid PurposeCode retrieved using GetReferenceData operation.

### 6.6.1.2 AddSession example request message

```

<AddSessionRequest>
  <!--typestring-->
  <CaseId>UTCa11082014</CaseId>
  <Session>
    <!--typestring-->
    <SessionId>UTSe11082014</SessionId>
    <!--typedatetime-->
    <SessionDate>2014-05-10T190103+1100</SessionDate>
    <!--typeint-->

```

```

<ServiceTypeId>22</ServiceTypeId>
<!--Optional-->
<!--typeint-->
<TotalNumberOfUnidentifiedClients>3</TotalNumberOfUnidentifiedClients>
<!--Optional-->
<!--typedecimal-->
<FeesCharged>1000.00</FeesCharged>
<!--Optional-->
<!--typestring-->
<MoneyBusinessCommunityEducationWorkshopCode>WRK01</MoneyBusinessCommunityEducationWorkshopCode>
<!--Optional-->
<!--typeboolean-->
<InterpreterPresent>>true</InterpreterPresent>
<!--Optional-->
<ExtraItems>
  <!--Zeroormoreretitions-->
  <!--typestring-->
  <ExtraItemCode>KITCHEN</ExtraItemCode>
</ExtraItems>
<!--Optional-->
<!--typeint-->
<Quantity>1</Quantity>
<!--Optional-->
<!--typeint-->
<Time>30</Time>
<!--Optional-->
<!--typeint-->
<TotalCost>100</TotalCost>
<!--Optional-->
<!--typestring-->
<TopicCode>ABUSENEGLECT</TopicCode>
<!--Optional-->
<!--typestring-->
<ServiceSettingCode>COMMVENUE</ServiceSettingCode>
<!--Optional-->
<!--typestring-->
<HardshipTypeCode>DROUGHT</HardshipTypeCode>
<!--Optional-->

```

```

<!--typestring-->
<ExternalReferralDestinationCode>LEGAL</ExternalReferralDestinationCode>
<Clients>
  <!--Zeroormore repetitions-->
  <SessionClient>
    <!--typestring-->
    <ClientId>CL0050</ClientId>
    <!--typestring-->
    <ParticipationCode>Client</ParticipationCode>
    <!--Optional-->
    <ClientReferralOutWithPurpose>
      <!--Zero or more repetitions-->
      <Referral>
        <!--typestring-->
        <TypeCode>Internal</TypeCode>
        <PurposeCodes>
          <!--Zeroormore repetitions-->
          <!--typestring-->
          <PurposeCode>PERSONAL</PurposeCode>
        </PurposeCodes>
      </Referral>
    </ClientReferralOutWithPurpose>
  </SessionClient>
</Clients>
</Session>
</AddSessionRequest>

```

**6.6.1.3 AddSession response message definition**

If the transaction is successful, the following structure will be returned.

Field	Data Type	Reference Date	Comments Validation Rules
<u>TransactionStatus</u>			

#### 6.6.1.4 AddSession example response message

```
<AddSessionResponse>
  <TransactionStatus>
    <TransactionStatusCode>Success</TransactionStatusCode>
  </TransactionStatus>
</AddSessionResponse>
```

#### 6.6.2 GetSession

**GetSession** operation can be used to retrieve details of a session within a case. The operation also returns the clients attached to the session.

##### 6.6.2.1 GetSession request message definition

Field	Mandatory Conditional Optional	Data Type	Length	Reference Date	Comments Validation Rules
CaseId	Mandatory	String	30		Organisation's case Id.
SessionId	Mandatory	String	30		Organisation's session Id.

##### 6.6.2.2 GetSession example request message

```
<GetSessionRequest>
  <!--type:string-->
  <CaseId>CA00010</CaseId>
  <!--type:string-->
  <SessionId>SS00010</SessionId>
</GetSessionRequest>
```

##### 6.6.2.3 GetSession response message definition

If the transaction is successful, the following structure will be returned.

Field	Data Type	Reference Date	Comments Validation Rules
<a href="#">TransactionStatus</a>			

Field	Data Type	Reference Date	Comments Validation Rules
Caseld			Organisation's case Id.
SessionDetails			
SessionId	String		Organisation's session Id
SessionDate	DateTime		Date of the session.
ServiceTypeId	Int		DEX's ServiceTypeId.
TotalNumberOfUnidentifiedClients	Int		Cannot exceed Case TotalNumberOfUnidentifiedClients.
FeesCharged	Decimal		Fees Charged to Client for selective activities.
MoneyBusinessCommunityEducationWorkshopCode	String		The MoneyBusinessCommunityEducationWorkshopCode value.
InterpreterPresent	Boolean		Specifying where interpreter was present for a session.
Extraltems	Array (Extraltem)		Optional according to activity and service type.
ExtraltemCode	String		The ExtraltemCode value.
Quantity	Int		Optional according to activity and service type.
Time	Int		Optional according to activity and service type.
TotalCost	Int		Optional according to activity and service type.
TopicCode	String		Optional according to activity and service type.
ServiceSettingCode	String		The ServiceSettingCode value.
HardshipTypeCode	String		Optional according to activity and service type.
ExternalReferralDestinationCode	String		Optional according to activity and service type.
CreatedDateTime	DateTime		Session created on.
Clients	Array (SessionClient)		Zero or more clients which are associated with the Session.
SessionClient	SessionClient		

Field	Data Type	Reference Date	Comments Validation Rules
ClientId	String		Organisation's client Id.
ParticipationCode	String		The ParticipationCode value.
ClientReferralOutWithPurpose	Array (Referral)		List of client referrals.
Referral	Referral		Client referral at the session.
TypeCode	String		The TypeCode value.
PurposeCodes	String		List Of DEX's referral purpose codes.
PurposeCode	String		The PurposeCode value.
ClientAssessments	Array (Assessment)		List of client assessments.
Assessment	Assessment		Client assessment.
AssessmentPhaseCode	String		The AssessmentPhaseCode value.
ScoreTypeCode	String		The ScoreTypeCode value.
AssessedByCode	String		The AssessedByCode value.
Scores	Array (string)		List of scores.
ScoreCode	String		The ScoreCode value.
SessionAssessments	Array (Assessment)		List of session assessments.
Assessment	Assessment		Session assessments.
AssessmentPhaseCode	String		The AssessmentPhaseCode value.
ScoreTypeCode	String		The ScoreTypeCode value.
AssessedByCode	String		The AssessedByCode value.
Scores	Array (string)		List of scores.
ScoreCode	String		The ScoreCode value.

**6.6.2.4 GetSession example response message**

```

<GetSessionResponse>
  <TransactionStatus>
    <TransactionStatusCode>Success</TransactionStatusCode>
    <Messages/>
  </TransactionStatus>
  <Session>
    <CaseId>CA00010</CaseId>
    <SessionDetail>
      <SessionId>SS00010</SessionId>
      <SessionDate>2014-05-30T00:00:00</SessionDate>
      <ServiceTypeId>12</ServiceTypeId>
      <TotalNumberOfUnidentifiedClients>2</TotalNumberOfUnidentifiedClients>
      <FeesCharged>5.00</FeesCharged>
      <MoneyBusinessCommunityEducationWorkshopCode>WRK01</MoneyBusinessCommunityEducationWorkshopCode>
      <InterpreterPresent>true</InterpreterPresent>
      <ExtraItems>
        <ExtraItemCode>KITCHEN</ExtraItemCode>
      </ExtraItems>
      <Quantity>1</Quantity>
      <Time>30</Time>
      <TotalCost>100</TotalCost>
      <TopicCode>ABUSENEGLECT</TopicCode>
      <ServiceSettingCode>COMMVENUE</ServiceSettingCode>
      <HardshipTypeCode>DROUGHT</HardshipTypeCode>
      <ExternalReferralDestinationCode>LEGAL</ExternalReferralDestinationCode>
    </SessionDetails>
    <CreatedDateTime>2014-09-17T16:19:14.32</CreatedDateTime>
    <Clients>
      <SessionClient>
        <ClientId>CLB00015</ClientId>
        <ParticipationCode>CLIENT</ParticipationCode>
        <ClientReferralOutWithPurpose>
          <Referral>
            <TypeCode>EXTERNAL</TypeCode>
            <PurposeCodes>
              <PurposeCode>HOUSING</PurposeCode>
            </PurposeCodes>
          </Referral>
        </ClientReferralOutWithPurpose>
      </SessionClient>
    </Clients>
  </Session>
</GetSessionResponse>

```

```

        <PurposeCode>PHYSICAL</PurposeCode>
    </PurposeCodes>
</Referral>
<Referral>
    <TypeCode>INTERNAL</TypeCode>
    <PurposeCodes>
        <PurposeCode>HOUSING</PurposeCode>
    </PurposeCodes>
</Referral>
</ClientReferralOutWithPurpose>
<ClientAssessments>
    <Assessment>
        <AssessmentPhaseCode>Pre</AssessmentPhaseCode>
        <ScoreTypeCode>Circumstances</ScoreTypeCode>
        <Scores>
            <ScoreCode>Age3</ScoreCode>
        </Scores>
    </Assessment>
</ClientAssessments>
</SessionClient>
<SessionClient>
    <ClientId>CLB00016</ClientId>
    <ParticipationCode>CLIENT</ParticipationCode>
    <ClientReferralOutWithPurpose>
        <Referral>
            <TypeCode>INTERNAL</TypeCode>
            <PurposeCodes>
                <PurposeCode>HOUSING</PurposeCode>
                <PurposeCode>PHYSICAL</PurposeCode>
            </PurposeCodes>
        </Referral>
    </ClientReferralOutWithPurpose>
    <ClientAssessments>
        <Assessment>
            <AssessmentPhaseCode>PRE</AssessmentPhaseCode>
            <ScoreTypeCode>CIRCUMSTANCES</ScoreTypeCode>
            <AssessedByCode>SDJOINT</AssessedByCode>
            <Scores>

```



```

        <ScoreCode>AGE1</ScoreCode>
      </Scores>
    </Assessment>
  </ClientAssessments>
</SessionClient>
</Clients>
<SessionAssessments>
  <Assessment>
    <AssessmentPhaseCode>PRE</AssessmentPhaseCode>
    <ScoreTypeCode>GROUP</ScoreTypeCode>
    <AssessedByCode>SDJOINT</AssessedByCode>
    <Scores>
      <ScoreCode>ORGSKILLS1</ScoreCode>
    </Scores>
  </Assessment>
</SessionAssessments>
</Session>
</GetSessionResponse>

```

### 6.6.3 UpdateSession

The **UpdateSession** operation is to be used when an organisation wishes to updated previously submitted Session data to the Data Exchange. This includes adding additional clients, removing clients, etc.

#### 6.6.3.1 UpdateSession request message definition

Field	Mandatory Conditional Optional	Data Type	Length	Reference Date	Comments Validation Rules
Caseld	Mandatory	String			Organisation's case Id. Must be an existing Case that is not locked.
Session					

Field	Mandatory Conditional Optional	Data Type	Length	Reference Date	Comments Validation Rules
SessionId	Mandatory	String	30		Organisation's session Id. Session Id and Case Id are used to identify a unique Session record, which is updated. <b>SessionId cannot be updated to new value.</b>
SessionDate	Mandatory	DateTim e			Date of the session. Must be today or in past and within OutletActivity date range.
ServiceTypeld	Mandatory	Int			DEX's serviceTypeld. Can be retrieved using GetOrganisationActivities.
TotalNumberOfUnidentifiedClients	Mandatory	Int			Cannot exceed TotalNumberOfUnidentifiedClients in a Case.
FeesCharged	Optional	Decimal			Fees charged to client for selective activities.
MoneyBusinessCommunityEducation WorkshopCode	Optional	String			Must be a valid. MoneyBusinessCommunityEducationWorkshopCode retrieved using GetReferenceData operation.
InterpreterPresent	Optional	Boolean			Specifying where interpreter was present for a session.
Extraltems	Optional	Array (Extralte m)			Optional according to activity and service type.
ExtraltemCode	Optional	String			Must be a valid ExtraltemCode retrieved using GetReferenceData operation.
Quantity	Optional	Int			Optional according to activity and service type.
Time	Optional	Int			Optional according to activity and service type.
TotalCost	Optional	Int			Optional according to activity and service type.

Field	Mandatory Conditional Optional	Data Type	Length	Reference Date	Comments Validation Rules
TopicCode	Optional	String			Must be a valid TopicCode retrieved using GetReferenceData operation. Optional according to activity and service type.
ServiceSettingCode	Optional	String			Must be a valid ServiceSettingCode retrieved using GetReferenceData operation.
HardshipTypeCode	Optional	String			Must be a valid HardshipTypeCode retrieved using GetReferenceData operation. Optional according to activity and service type.
ExternalReferralDestinationCode	Optional	String			Must be a valid ExternalReferralDestinationCode retrieved using GetReferenceData operation. Optional according to activity and service type.
Clients	Optional	Array (Session Client)			Zero or more clients which are associated with the Case.
SessionClient	Optional				
ClientId	Conditional Mandatory	String			Organisation's client Id. Mandatory If client is provided. It has to be unique for all the clients registered with the organisation.
ParticipationCode	Conditional Mandatory	String			Mandatory If client is provided. Must be a valid ParticipationCode retrieved using GetReferenceData operation.
ClientReferralOutWithPurpose	Optional	Array (Referral )			List of client Referrals.
Referral	Optional				Client referral at the session.

Field	Mandatory Conditional Optional	Data Type	Length	Reference Date	Comments Validation Rules
TypeCode	Conditional Mandatory	String			Mandatory If referral is provided. Must be a valid TypeCode retrieved using GetReferenceData operation.
PurposeCodes	Conditional Mandatory	Array (string)			List Of DEX's referral purpose codes. Mandatory If Referral is provided.
Purpose Code	Conditional Mandatory	String			Mandatory If referral is provided. Must be a valid PurposeCode retrieved using GetReferenceData operation.

### 6.6.3.2 UpdateSession example request message

```

<UpdateSessionRequest>
  <!--typestring-->
  <CaseId>0050</CaseId>
  <Session>
    <!--typestring-->
    <SessionId>0001</SessionId>
    <!--typedatetime-->
    <SessionDate>2014-03-12T000000</SessionDate>
    <!--typeint-->
    <ServiceTypeId>5</ServiceTypeId>
    <!--typeint-->
    <TotalNumberOfUnidentifiedClients>3</TotalNumberOfUnidentifiedClients>
    <!--Optional-->
    <!--typedecimal-->
    <FeesCharged>1000.00</FeesCharged>
    <!--Optional-->
    <!--typestring-->
    <MoneyBusinessCommunityEducationWorkshopCode>WRK01</MoneyBusinessCommunityEducationWorkshopCode>
    <!--typeboolean-->
    <InterpreterPresent>true</InterpreterPresent>
    <ExtraItems>

```

```

<!--Zeroormorer repetitions-->
<!--typestring-->
<ExtraItemCode>KITCHEN</ExtraItemCode>
</ExtraItems>
<!--Optional-->
<!--typeint-->
<Quantity>1</Quantity>
<!--Optional-->
<!--typeint-->
<Time>30</Time>
<!--Optional-->
<!--typeint-->
<TotalCost>100</TotalCost>
<!--Optional-->
<!--typestring-->
<TopicCode>ABUSENEGLECT</TopicCode>
<!--Optional-->
<!--typestring-->
<ServiceSettingCode>COMMVENUE</ServiceSettingCode>
<!--Optional-->
<!--typestring-->
<HardshipTypeCode>DROUGHT</HardshipTypeCode>
<!--Optional-->
<!--typestring-->
<ExternalReferralDestinationCode>LEGAL</ExternalReferralDestinationCode>
<Clients>
<!--Zeroormorer repetitions-->
<SessionClient>
  <!--typestring-->
  <ClientId>CL0050</ClientId>
  <!--typestring-->
  <ParticipationCode>SUPPORT</ParticipationCode>
  <!--Optional-->
  <ClientReferralOutWithPurpose>
    <!--Zeroormorer repetitions-->
    <Referral>
      <!--typestring-->
      <TypeCode>INTERNAL</TypeCode>
    </Referral>
  </ClientReferralOutWithPurpose>
</SessionClient>
</Clients>

```

```

        <PurposeCodes>
            <!--Zeroormore repetitions-->
            <!--typestring-->
            <Purpose>AGE</Purpose>
        </PurposeCodes>
    </Referral>
</ClientReferralOutWithPurpose>
</SessionClient>
</Clients>
</Session>
</UpdateSessionRequest>
    
```

### 6.6.3.3 UpdateSession response message definition

If the transaction is successful, the following structure will be returned.

Field	Data Type	Reference Date	Comments Validation Rules
<u>TransactionStatus</u>			

### 6.6.3.4 UpdateSession example response message

```

<UpdateSessionResponse>
  <TransactionStatus>
    <TransactionStatusCode>Success</TransactionStatusCode>
    <Messages/>
  </TransactionStatus>
</UpdateSessionResponse>
    
```

## 6.6.4 DeleteSession

**DeleteSession** operation can be used to delete a Session attached to a Case.

#### 6.6.4.1 DeleteSession request message definition

Field	Mandatory Conditional Optional	Data Type	Length	Reference Date	Comments Validation Rules
CaseId	Mandatory	String			Organisation's case Id.
SessionId	Mandatory	String			Organisation's session Id for the session to be deleted.

#### 6.6.4.2 DeleteSession example request message

```
<DeleteSessionRequest>
  <!--typestring-->
  <CaseId>0050</CaseId>
  <!--typestring-->
  <SessionId>0001</SessionId>
</DeleteSessionRequest>
```

#### 6.6.4.3 DeleteSession response message definition

If the transaction is successful, the following structure will be returned.

Field	Data Type	Reference Date	Comments Validation Rules
<u>TransactionStatus</u>			

#### 6.6.4.4 DeleteSession example response message

```
<DeleteSessionResponse>
  <TransactionStatus>
    <TransactionStatusCode>Success</TransactionStatusCode>
    <Messages/>
  </TransactionStatus>
</DeleteSessionResponse>
```

## 6.7 DataCollection.Assessments

### 6.7.1 UpdateClientAssessments

The **UpdateClientAssessments** operation is to be used when an organisation wishes to add new client assessment data, or update client assessment data already submitted to the Data Exchange. If the validation of the data is unsuccessful, an error will be generated and no record will be updated.

#### 6.7.1.1 UpdateClientAssessments request message definition

Field	Mandatory Conditional Optional	Data Type	Length	Reference Date	Comments Validation Rules
ClientAssessment					
CaseId	Mandatory	String			Organisation's case Id. Must be an existing Case that is not locked.
SessionId	Mandatory	String			Organisation's session Id for the Session to be updated.
ClientId	Mandatory	String			Client Id who attended the session to be updated.
Assessments	Optional				List of new or/and updated assessments for a client at a session.
Assessment	Optional				New or/and updated assessments for a client at a session.
AssessmentPhaseCode	Mandatory	String			Must be a valid AssessmentPhaseCode retrieved using GetReferenceData operation.
ScoreTypeCode	Mandatory	String			Must be a valid ScoreTypeCode retrieved using GetReferenceData operation.
AssessedByCode	Optional	String			Must be a valid AssessedByCode retrieved using GetReferenceData operation
Scores	Mandatory	Array(string)			List of score codes for assessment.
ScoreCode	Mandatory	String			Must be a valid ScoreCode retrieved using GetAssessmentReferenceDetails operation.



Field	Mandatory Conditional Optional	Data Type	Length	Reference Date	Comments Validation Rules
RemoveAll	Mandatory	Boolean			Confirmation flag to indicate to remove all the assessment records associated with the client assessment.

### 6.7.1.2 UpdateClientAssessments example request message

```

<UpdateClientAssessmentsRequest>
  <ClientAssessment>
    <!--type:string-->
    <CaseId>CA0005A</CaseId>
    <!--type:string-->
    <SessionId>SS0123</SessionId>
    <!--type:string-->
    <ClientId>SA0002</ClientId>
    <Assessments>
      <!--Zeroormorer repetitions:-->
      <Assessment>
        <!--type:string-->
        <AssessmentPhaseCode>PRE</AssessmentPhaseCode>
        <!--type:string-->
        <ScoreTypeCode>GOALS</ScoreTypeCode>
        <!--type:string-->
        <AssessedByCode>SDJOINT</AssessedByCode>
        <Scores>
          <!--Zeroormorer repetitions:-->
          <!--type:string-->
          <ScoreCode>BEHAVIOURS3</ScoreCode>
        </Scores>
      </Assessment>
    </Assessments>
    <!--type:Boolean-->
    <RemoveAll>>false</RemoveAll>
  </ClientAssessment>
</UpdateClientAssessmentsRequest>

```

### 6.7.1.3 UpdateClientAssessments response message definition

If the transaction is successful, the following structure will be returned.

Field	Data Type	Reference Date	Comments Validation Rules
<a href="#">TransactionStatus</a>			

### 6.7.1.4 UpdateClientAssessments example response message

```
<UpdateClientAssessmentsResponse>
  <TransactionStatus>
    <TransactionStatusCode>Success</TransactionStatusCode>
    <Messages/>
  </TransactionStatus>
</UpdateClientAssessmentsResponse>
```

## 6.7.2 UpdateSessionAssessments

The **UpdateSessionAssessments** operation is to be used when an organisation wishes to add new session assessment data associated with the session, or update session assessment data associated with the session that is already submitted to the Data Exchange. If the validation of the data is unsuccessful, an error will be generated and no record will be updated.

### 6.7.2.1 UpdateSessionAssessments request message definition

Field	Mandatory Conditional Optional	Data Type	Length	Reference Date	Comments Validation Rules
SessionAssessment					
Caseld	Mandatory	String			Organisation's case Id. Must be an existing Case that is not locked.
SessionId	Mandatory	String			Organisation's Session Id for the session to be updated.
Assessments	Optional				List of new or/and updated assessments for a session applicable to all clients in a session.

Field	Mandatory Conditional Optional	Data Type	Length	Reference Date	Comments Validation Rules
Assessment	Optional				New or/and updated assessments for a session applicable to all Clients in a Session.
AssessmentPhaseCode	Mandatory	String			Must be a valid AssessmentPhaseCode retrieved using GetReferenceData operation. Maximum 1 pre and 1 post assessment per session.
ScoreTypeCode	Mandatory	String			Must be a valid ScoreTypeCode retrieved using GetReferenceData operation.
AssessedByCode	Optional	String			Must be a valid AssessedByCode retrieved using GetReferenceData operation.
Scores	Optional				List of score codes for assessment.
ScoreCode	Mandatory	String			Must be a valid ScoreCode retrieved using GetAssessmentReferenceDetails operation.
RemoveAll	Mandatory	Boolean			Confirmation flag to indicate to remove all the assessment records associated with the session assessment for the case.

### 6.7.2.2 UpdateSessionAssessments example request message

```
<UpdateSessionAssessmentsRequest>
  <SessionAssessment>
    <!--type:string-->
    <CaseId>CA0005A</CaseId>
    <!--type:string-->
    <SessionId>SS0123</SessionId>
    <Assessments>
      <!--Zeroormore repetitions:-->
      <Assessment>
        <!--type:string-->
        <AssessmentPhaseCode>Pre</AssessmentPhaseCode>
        <!--type:string-->
```

```

    <ScoreTypeCode>Group</ScoreTypeCode>
    <!--type:string-->
    <AssessedByCode>SDJOINT</AssessedByCode>
    <Scores>
      <!--Zeroormorer repetitions:-->
      <!--type:string-->
      <ScoreCode>ORGSKILLS1</ScoreCode>
    </Scores>
  </Assessment>
</Assessments>
<!--type:Boolean-->
<RemoveAll>>false</RemoveAll>
</SessionAssessment>
</UpdateSessionAssessmentsRequest>

```

### 6.7.2.3 UpdateSessionAssessments response message definition

If the transaction is successful, the following structure will be returned.

Field	Data Type	Reference Date	Comments Validation Rules
<u>TransactionStatus</u>			

### 6.7.2.4 UpdateSessionAssessments example response message

```

<UpdateSessionAssessmentsResponse>
  <TransactionStatus>
    <TransactionStatusCode>Success</TransactionStatusCode>
    <Messages/>
  </TransactionStatus>
</UpdateSessionAssessmentsResponse>

```

## 6.8 DataCollection.Outlets

### 6.8.1 AddOutlet

The **AddOutlet** operation is to be used when an organisation wishes add a new outlet to the Data Exchange system. Outlet name and address are mandatory. Appropriate **OutletActivities** can be included at the same time the outlet is created. While adding a new outlet, **OutletActivities** are optional.

However, while performing an **UpdateOutlet** operation, new **OutletActivities** can be added or existing ones updated, but any **OutletActivities** that are omitted from the update will indicate that they are to be removed from the **Outlet** within the Data Exchange.

If the validation of the data is unsuccessful, an error will be generated and no record will be updated.

#### 6.8.1.1 AddOutlet Request Message Definition

Field	Mandatory Conditional Optional	Data Type	Length	Reference Date	Comments Validation Rules
OutletDetails					
OutletName	Mandatory	String			
Address	Mandatory				
Suburb	Mandatory	String	50		Suburb from address of an outlet.
State	Mandatory	String	3		State from address of an outlet – sourced from GetReferenceData – State.
Postcode	Mandatory	String	4		Postcode from address of an outlet.
AddressLine1	Mandatory	String	180		Street address from address of an outlet.
AddressLine2	Optional	String	180		Overflow from address line 1 from address of an outlet.
OutletActivities	Optional				
OutletActivity					
OrganisationActivityId	Mandatory	Int			Sourced from GetOrganisationActivities.
StartDate	Mandatory	Date			Date range must be equal to or within the OrganisationActivity start and end dates.

Field	Mandatory Conditional Optional	Data Type	Length	Reference Date	Comments Validation Rules
EndDate	Mandatory	Date			Date range must be equal to or within the OrganisationActivity start and end dates.

### 6.8.1.2 AddOutlet example request message

```

<AddOutletRequest>
  <OutletDetails>
    <OutletName>Bob's Family Services</OutletName>
    <Address>
      <Suburb>Springfield</Suburb>
      <State>ACT</State>
      <Postcode>2600</Postcode>
      <AddressLine1>1 Main Street</AddressLine1>
      <AddressLine2/>
    </Address>
    <OutletActivities>
      <OutletActivity>
        <OrganisationActivityId>324</OrganisationActivityId>
        <StartDate>2015-07-01T00:00:00+10:00</StartDate>
        <EndDate>2015-12-31T00:00:00+10:00</EndDate>
      </OutletActivity>
    </OutletActivities>
  </OutletDetails>
</AddOutletRequest>
    
```

### 6.8.1.3 AddOutlet response message definition

If the transaction is successful, the following structure will be returned.

Field	Data Type	Reference Date	Comments Validation Rules
<u>TransactionStatus</u>			
OutletId	Int		The OutletId of the successfully added outlet.

### 6.8.1.4 AddOutlet Example response message

```
<AddOutletResponse>
  <TransactionStatus>
    <TransactionStatusCode>Success</TransactionStatusCode>
    <Messages/>
  </TransactionStatus>
  <OutletId>999</OutletId>
</AddOutletResponse>
```

## 6.8.2 UpdateOutlet

The **UpdateOutlet** operation is to be used when an organisation wishes to update an Outlet that exists in the Data Exchange system. OutletId, Outlet name and address are mandatory.

While performing an UpdateOutlet operation, new **OutletActivities** can be added or existing ones updated, but any **OutletActivities** that are omitted from the update will indicate that they are to be removed from the Outlet within the Data Exchange. An **OutletActivity** will only be deleted if no Case data is associated with it, otherwise it will be end dated to the current date.

If the validation of the data is unsuccessful, an error will be generated and no record will be updated.

### 6.8.2.1 UpdateOutlet request message definition

Field	Mandatory Conditional Optional	Data Type	Length	Reference Date	Comments Validation Rules
UpdateOutletRequest					
OutletId	Mandatory	Int			Id of an Outlet added to DEX via AddOutlet. Can be sourced from GetOrganisation details.
OutletName	Mandatory	String			
Address	Mandatory				
Suburb	Mandatory	String	50		Suburb from address of an outlet.
State	Mandatory	String	3		State from address of an outlet – sourced from GetReferenceData – State.
Postcode	Mandatory	String	4		Postcode from address of an outlet.

Field	Mandatory Conditional Optional	Data Type	Length	Reference Date	Comments Validation Rules
AddressLine1	Mandatory	String	180		Street address from address of an outlet.
AddressLine2	Optional	String	180		Overflow from address line 1 from address of an outlet.
OutletActivities	Optional				
OutletActivity					NOTE: Omitting an OutletActivity that has previously been added to the Outlet will indicate that the OutletActivity should be removed/deleted.
OrganisationActivityId	Mandatory	Int			Sourced from GetOrganisationActivities.
StartDate	Mandatory	Date			Date range must be equal to or within the OrganisationActivity start and end dates.
EndDate	Mandatory	Date			Date range must be equal to or within the OrganisationActivity start and end dates.

### 6.8.2.2 UpdateOutlet example request message

```

<UpdateOutletRequest>
  <OutletId>435</OutletId>
  <OutletDetails>
    <OutletName>Bob's Family Services</OutletName>
    <Address>
      <Suburb>Springfield</Suburb>
      <State>ACT</State>
      <Postcode>2600</Postcode>
      <AddressLine1>1 Main Street</AddressLine1>
      <AddressLine2/>
    </Address>
    <OutletActivities>
      <OutletActivity>
        <OrganisationActivityId>324</OrganisationActivityId>
        <StartDate>2015-07-01T00:00:00+10:00</StartDate>
        <EndDate>2015-12-31T00:00:00+10:00</EndDate>
      </OutletActivity>
    </OutletActivities>
  </OutletDetails>
</UpdateOutletRequest>

```



```

    </OutletActivity>
  </OutletActivities>
</OutletDetails>
</UpdateOutletRequest>

```

### 6.8.2.3 UpdateOutlet response message definition

If the transaction is successful, the following structure will be returned.

Field	Data Type	Reference Date	Comments Validation Rules
<u>TransactionStatus</u>			

### 6.8.2.4 UpdateOutlet example response message

```

<UpdateOutletResponse>
  <TransactionStatus>
    <TransactionStatusCode>Success</TransactionStatusCode>
    <Messages/>
  </TransactionStatus>
</UpdateOutletResponse>

```

## 6.8.3 DeleteOutlet

The **DeleteOutlet** operation is to be used when an organisation wishes delete an outlet that exists in the Data Exchange system.

The outlet will be deleted only when there is no case data associated with it. **OutletActivities** with no case data will be deleted, otherwise **OutletActivities** with case data will be end dated to the current date and the parent Outlet will not be deleted.

Warning messages will be returned indicating if the outlet cannot be deleted due to related case data.

### 6.8.3.1 DeleteOutlet Request message definition

Field	Mandatory Conditional Optional	Data Type	Length	Reference Date	Comments Validation Rules
OutletId	Mandatory	Int			Id of an Outlet added to DEX via AddOutlet. Can be sourced from GetOrganisation details.

### 6.8.3.2 DeleteOutlet example request message

```
<DeleteOutletRequest>
  <OutletId>435</OutletId>
</DeleteOutletRequest>
```

### 6.8.3.3 DeleteOutlet response message definition

If the transaction is successful, the following structure will be returned.

Field	Data Type	Reference Date	Comments Validation Rules
<u>TransactionStatus</u>			

### 6.8.3.4 DeleteOutlet example response message

```
<DeleteOutletResponse>
  <TransactionStatus>
    <TransactionStatusCode>Success</TransactionStatusCode>
    <Messages/>
  </TransactionStatus>
</DeleteOutletResponse>
```

## 6.9 Common message definitions

### 6.9.1 Request message definitions

#### 6.9.1.1 Search request message definition

The following fields are common to **SearchClient**, **SearchCase** and **ValidateForDuplicateClient** operations. The fields are mandatory and must be passed in the requests along with the other operation specific fields described in the relevant sections below.

Field	Mandatory Conditional Optional	Data Type	Length	Comments Validation Rules
PageIndex	Mandatory	Int		The page number.

Field	Mandatory Conditional Optional	Data Type	Length	Comments Validation Rules
PageSize	Mandatory	Int		Number of records returned per page. The max value allowed is <b>100</b> . If value greater than 100 is passed, then the result set is truncated to 100 records and a warning message is returned.
IsAscending	Mandatory	Boolean		Acceptable values: true, false.
SortColumn	Mandatory	Enumeration		The following are valid <b>SortColumn</b> values for the <b>SearchClient</b> and <b>ValidateForDuplicateClient</b> : <ul style="list-style-type: none"> <li>• CreatedDate</li> <li>• ClientId</li> <li>• Name</li> <li>• BirthDate</li> </ul> The following are valid <b>SortColumn</b> values for the <b>SearchCase</b> : <ul style="list-style-type: none"> <li>• CreatedDate</li> <li>• Caseld</li> <li>• OutletActivity</li> <li>• Outlet</li> <li>• SessionCount</li> </ul>

## 6.9.2 Response message definitions

**6.9.2.1 Client response message definition** The following client response message definition fields are common to **GetClient**, **SearchClient** and some of the other operations.

Field	Data Type	Reference Date	Comments Validation Rules
Client			
ClientDetail			
ClientId	String		Organisation's client Id.

Field	Data Type	Reference Date	Comments Validation Rules
SLK	String		Client SLK generated or supplied .
ConsentToProvideDetails	Boolean		Personal details consent.
ConsentedForFutureContacts	Boolean		Future contact consent.
GivenName	String		Clients given name.
FamilyName	String		Clients family name.
IsUsingPsuedonym	Boolean		Specifying if name is a psuedonym or not.
BirthDate	DateTime		Date Of Birth.
IsBirthDateAnEstimate	Boolean		Specifying if BirthDate is an estimate or not.
GenderCode	String		GenderCode value.
GenderDetails	String		GenderDetails value
ResidentialAddress			Client address details.
Suburb	String		Suburb from residential address of a client.
State	String		State from residential address of a client.
Postcode	String		Postcode from residential address of a client.
AddressLine1	String		Street address from residential address of a client.
AddressLine2	String		Overflow from address line 1 from residential address of a client.
CountryOfBirthCode	String		CountryOfBirthCode value.
LanguageSpokenAtHomeCode	String		LanguageSpokenAtHomeCode value.
AboriginalOrTorresStraitIslanderOriginCode	String		AboriginalOrTorresStraitIslanderOriginCode value.
HasDisabilities	Boolean		Specifying if Client has disabilities.
HomelessIndicatorCode	String		HomelessIndicatorCode value.
HouseholdCompositionCode	String		HouseholdCompositionCode value.

Field	Data Type	Reference Date	Comments Validation Rules
MainSourceOfIncomeCode	String		MainSourceOfIncomeCode value.
IncomeFrequencyCode	String		IncomeFrequencyCode value.
IncomeAmount	Int		Client IncomeAmount .
FirstArrivalMonth	String		Month Client first arrived in Australia Full name of the month: January, February, March, April, May, June, July, August, September, October, November, December
FirstArrivalYear	Int		Year client first arrived in Australia.
MigrationVisaCategoryCode	String		MigrationVisaCategoryCode value.
AncestryCode	String		AncestryCode value.
HasCarer	Boolean		true = If client has a carer false = If client does not have a carer
EducationLevelCode	String		EducationLevelCode value.
EmploymentStatusCode	String		EmploymentStatusCode value.
IsClientACarer	Boolean		true = If client is a carer false = If client is not a carer
NDISEligibilityCode	String		NDISEligibilityCode value.
Disabilities	Array		
DisabilityCode	String		DisabilityCode value.
CreatedDateTime	DateTime		DateTime Client was created in DEX's database.

## 7 Appendix A. Activity specific requirements

The following lists the activity specific requirements fields.

Code	Related to entity and property	Description
ACCOMMODATIONTYPE	Client: AccommodationTypeCode	If a client is associated to a case where its activity specifies this code, then 'AccommodationTypeCode' property on the client is required and must be supplied with a valid value. This also implies that clients will not be accepted on a session within that case.
DVACARDSTATUS	Client: DVACardStatusCode	If a Client is associated to a case where its activity specifies this code, then 'DVACardStatusCode' property on the Client is required and must be supplied with a valid value. This also implies that Clients will not be accepted on a session within that case.
HOUSEHOLDMANDATORY	Client: HouseholdCompositionCode	If a client is associated to a case where its activity specifies this code, then 'HouseholdCompositionCode' property on the client is required and must be supplied with a valid value. This also implies that clients will not be accepted on a session within that case.
HASCARER	Client: HasCarer	If a client is associated to a case where its activity specifies this code, then 'HasCarer' property on the client is required and must be supplied with a valid value. This also implies that clients will not be accepted on a session within that case.
PARENTINGAGREEMENTOUTCOME	Case: ParentingAgreementOutcome: ParentingAgreementOutcomeCode, DateOfParentingAgreement, DidLegalPractitionerAssistWithFormalisingAgreement	When applied to an activity, 'ParentingAgreementOutcomeCode', 'DateOfParentingAgreement' and 'DidLegalPractitionerAssistWithFormalisingAgreement' properties on case can be supplied.
CERTIFICATE TYPE	Case: Section60I: Section60ICertificateTypeCode, DateIssued	When applied to an activity, 'Section60ICertificateTypeCode' and 'DateIssued' properties on case can be supplied.

Code	Related to entity and property	Description
PROPERTYAGREEMENTOUTCOME	Case: PropertyAgreementOutcome: PropertyAgreementOutcomeCode, DateOfPropertyAgreement, DidLegalPractitionerAssistInPropertyMe diation	When applied to an activity, 'PropertyAgreementOutcomeCode', 'DateOfPropertyAgreement' and 'DidLegalPractitionerAssistInPropertyMediation' properties on Case can be supplied.
AGBUSINESSTYPE	Case: AgBusinessTypeCode	When applied to an activity, 'AgBusinessTypeCode' property for Case can be supplied.
EXITCASE	Case Client: ExitReasonCode	When applied to an activity, 'ExitReasonCode' property for the Case Client can be supplied.
FEESCHARGEDSESSIONMANDT	Session: FeesCharged	When applied to an activity, 'FeesCharged' property on Session must be supplied and with a valid value.
FEESCHARGEDSESSIONOPTNL	Session: FeesCharged	When applied to an activity, 'FeesCharged' property on Session can be supplied. If supplied, must have a valid value.
TOPIC	Session: TopicCode	When applied to an activity, 'TopicCode' property on Session must be supplied and with a valid value.
UNIDENTIFIEDCLIENTS	Case and Session	When applied to an Activity, 'TotalNumberOfUnidentifiedClients' property on case and session can be supplied and is required. When supplied, must have a valid value.

## 8 Appendix B. Service type specific requirements

List of applicable codes for a service type is available from **GetOrganisationActivities** operation.

Code	Related entity and property	Description
ASSISTANCECOSTAMOUNT	Session: TotalCost	When applied to a service type 'TotalCost' property on session is required and must be supplied with valid values to record a new session or update an existing session.
ASSISTANCEITEM	Session: Extraltems: ExtraltemCode	When applied to a service type 'Extraltems' property on session is required and must be supplied with a valid value to record a new session or update an existing session.
ASSISTANCEMINUTES	Session: Time	When applied to a service type 'Time' property on session is required and must be supplied with a valid value to record a new session or update an existing session.
ASSISTANCEQUANTITY	Session: Quantity	When applied to a service type 'Quantity' property on session is required and must be supplied with a valid value to record a new session or update an existing session.
WORKSHOP	Session: MoneyBusinessCommunityEducationWorkshopCode	When applied to a service type 'MoneyBusinessCommunityEducationWorkshopCode' property on session is required and must be supplied with a valid value to record a new session or update an existing session.
HARDSHIPTYPE	Session: HardshipTypeCode	When applied to a service type 'HardshipTypeCode' property on session is required and must be supplied with a valid value to record a new session or update an existing session.
EXTERNALREFERRALDESTINATION	Session: ExternalReferralDestinationCode	When applied to a service type 'ExternalReferralDestinationCode' property on session can be supplied with a valid value to record a new session or update an existing session.